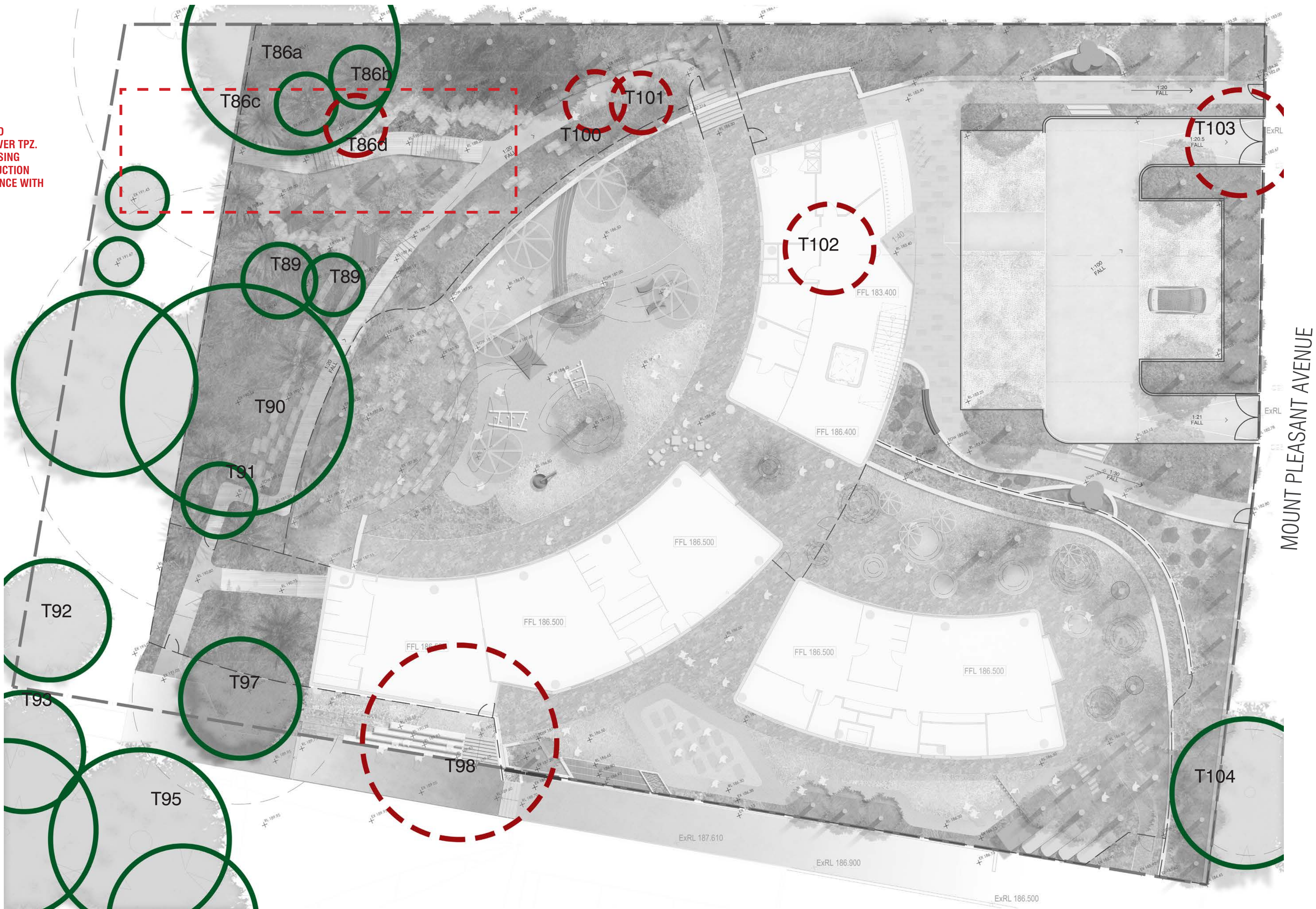


EXISTING TREE RETENTION & REMOVAL PLAN

REV B: TIMBER STEPS AND
ELEVATED PATH ADDED OVER TPZ.
DECK TO BE INSTALLED USING
TREE SENSITIVE CONSTRUCTION
METHODOLOGY IN ACORDANCE WITH
ARBORIST REPORT

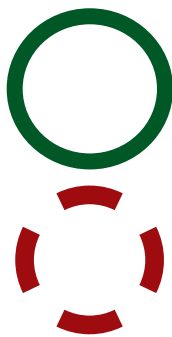


TREE REPLACEMENT SUMMARY:

TOTAL NUMBER OF EXISTING TREES TO BE REMOVED: 6
TOTAL NUMBER OF EXISTING TREES TO BE RETAINED: 11

TOTAL NUMBER OF NEW TREES TO BE PLANTED: 79 (45 OF WHICH ARE SPECIES LISTED IN THE ARBORISTS REPORT AS APPROPRIATE FOR REPLACEMENT PLANTING)

LEGEND



TREE TO BE RETAINED
TREE TO BE REMOVED

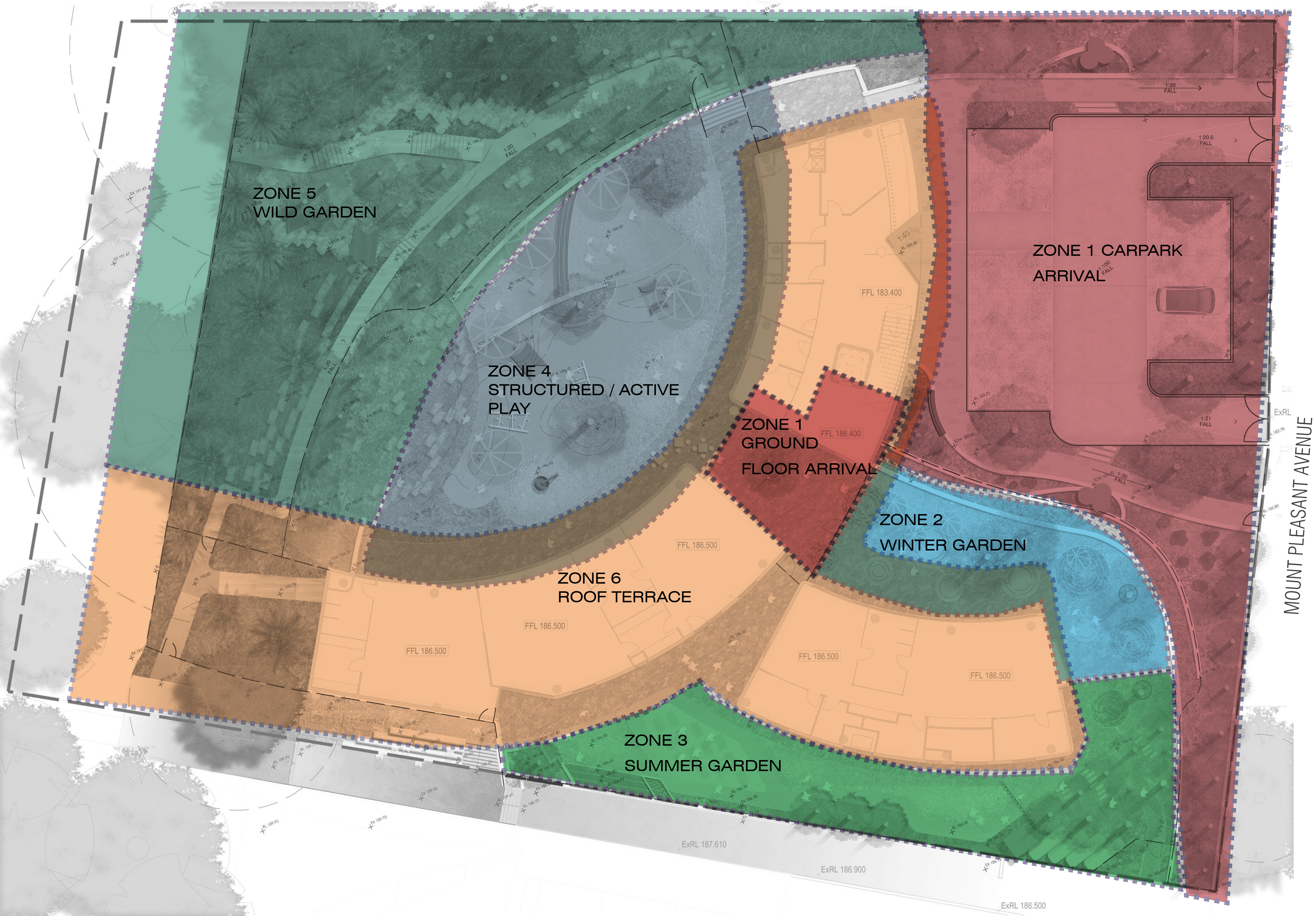
TREE NUMBERS REFER TO EARTHSCAPE 'ARBORICULTURAL ASSESSMENT REPORT - EARLY LEARNING CENTRE', NOV 2018; REFER TO THIS REPORT FOR FURTHER DETAILS

LOGS AND BRANCHES FROM REMOVED TREES TO BE TO BE RETAINED ON SITE AND SALVAGED FOR USE IN NATURE PLAY ELEMENTS (STEPPERS, CUBBIES, BALANCE BEAMS ETC)

ALL WORKS WITHIN TREE PROTECTION ZONE, INCLUDING EXCAVATION FOR PLANTING, PLACEMENT OF SANDSTONE LOG TERRACING AND FOOTINGS FOR TIMBER BOARDWALK TO BE UNDERTAKEN USING TREE SENSITIVE CONSTRUCTION METHODOLOGY. REFER 10.5 DEMOLITION WITHIN TREE PROTECTION ZONE AND 10.6 EXCAVATIONS WITHIN TREE PROTECTION ZONES OF EARTHSCAPE 'ARBORICULTURAL ASSESSMENT REPORT - EARLY LEARNING CENTRE', NOV 2018;

REV.	DATE	STATUS	INITIALS
A	21/11/18	DEVELOPMENT APPLICATION	TM
B	10/07/19	TIMBER STEPS & PATH ADDED	TM

LANDSCAPE ZONING PLAN



LEGEND

- ZONE 1 CARPARK & ARRIVAL
- ZONE 2 WINTER GARDEN - SOLAR ACCESS
- ZONE 3 SUMMER GARDEN
- ZONE 4 STRUCTURED / ACTIVE PLAY
- ZONE 5 WILD GARDEN
- ZONE 6 ROOF TERRACE

REFER OVER PAGE FOR DESIGN INTENT OF EACH OF THE DIFFERENT ZONES

UNENCUMBERED OUTDOOR SPACE

CARPARK & ARRIVAL	N/A
WINTER GARDEN	182m ²
SUMMER GARDEN	188m ²
STRUCTURED / ACTIVE PLAY	465m ²
WILD GARDEN	270m ²
ROOF TERRACE	342m ²
TOTAL	1474m²
Equal to approx. 18m ² per child	

REV	DATE	STATUS	INITIALS
A	21/11/18	DEVELOPMENT APPLICATION	TM
B	10/07/19	TIMBER STEPS & PATH ADDED	TM



LANDSCAPE ZONING - DESIGN INTENT

ZONE 1 - ARRIVAL EXPERIENCE



- Shade and greenery
- Arrival experience.... shouts “play”
- Bold & unusual planting form and textures
- Colourful & interactive signage
- Playful and fun for all ages to enjoy
- Sculptural art works
- Sculptural feature planting
- Wild and wonderful planting palette
- WSUD elements with educational interpretation

ZONE 2 - WINTER GARDEN (0 - 2 YEAR OLDS)



- Provide safe and secure outdoor space to make the children feel confident to explore, touch and learn
- Colourful, soft, lightweight, movable play equipment to lift and move around
- Safe, soft & sensory materials and textures for touching and crawling over
- Rubber softfall for colourful floor patterns
- Safe seating areas
- Architectural shade structures
- Soft & sensory flooring
- Interaction with vegetation and nature

ZONE 3 - SUMMER GARDEN (1 - 3 YEAR OLDS)



- Provide safe and secure outdoor space to make the children feel confident to explore, touch and learn
- Colourful, soft, moveable play equipment to lift and move around
- Safe, undulating walking track crawling and learning to walk
- Provide vertical elements and height for scale, looking up and moving through
- Adaptable baby yoga space
- Movable play equipment
- Small water feature and feature wall
- Water treatment and storage, with educational interpretation
- Open lawn spaces for adaptable play

ZONE 4 - STRUCTURED / ACTIVE PLAY (3 - 5 YEAR OLDS)



- Creative adventure to challenge & evaluate risk and help build confidence
- Supervised play zone
- Fixed, bold & colourful play structures
- Uneven surfaces
- Varying heights for slides & ladders
- Climbing wall with large hand grips
- Sandpits & water play elements
- Sandstone escarpment for nature play element
- Architectural shade structures

ZONE 5 - WILD GARDEN (4 - 5 YEAR OLDS)



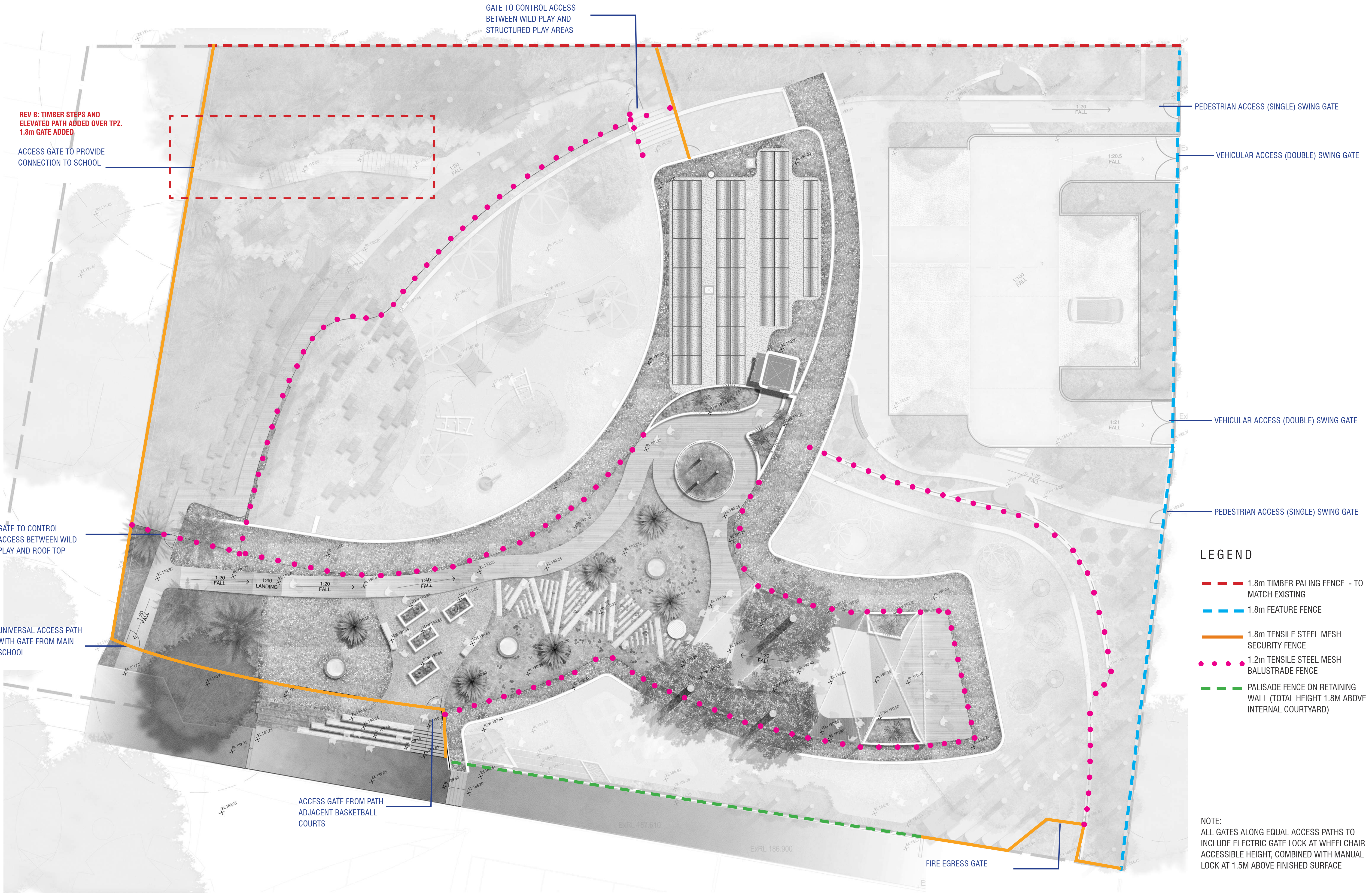
- Creative adventure to challenge & evaluate risk and help build confidence and negotiation skills
- Fenced off space for supervised play only
- Informal ‘nature’ play structures & cubbies and tunnels for imagination play
- Woodland walk & Educational excursions around garden
- Uneven surfaces & different sized boulders and logs for balance
- Sandpits & mud
- Native plants to encourage birds
- Signs and hidden surprises

ZONE 6 - ROOF TERRACE (4 - 5 YEAR OLDS)



- 4 - 5 year olds and older children from the Primary School
- Supervised play zone
- Edible plants for learning how to grow
- Raised planters with small trees and seating elements
- Robust plants suitable for a rooftop environment
- Raised deck walkways and groundcovers
- Views over garden and through to ground level through skylights
- Non accessible extensive roof garden to soften edges
- 1.2m high balustrade to enclose the garden / provide edge protection

FENCE ARRANGEMENT PLAN



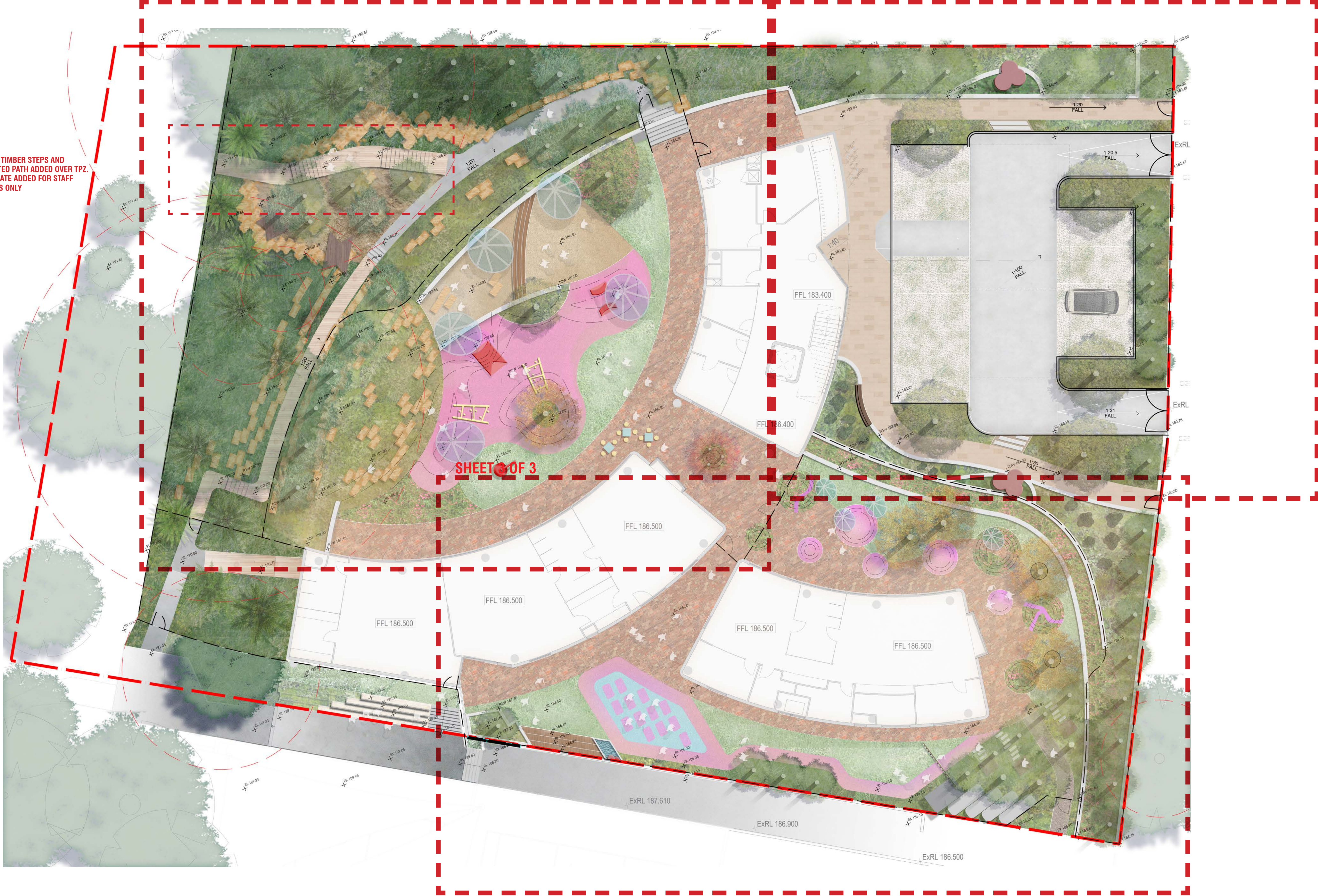
REV	DATE	STATUS	INITIALS
A	21/11/18	DEVELOPMENT APPLICATION	TM
B	10/07/19	TIMBER STEPS & PATH ADDED	TM

LANDSCAPE PLAN - GROUND LEVEL KEY PLAN

SHEET 2 OF 3

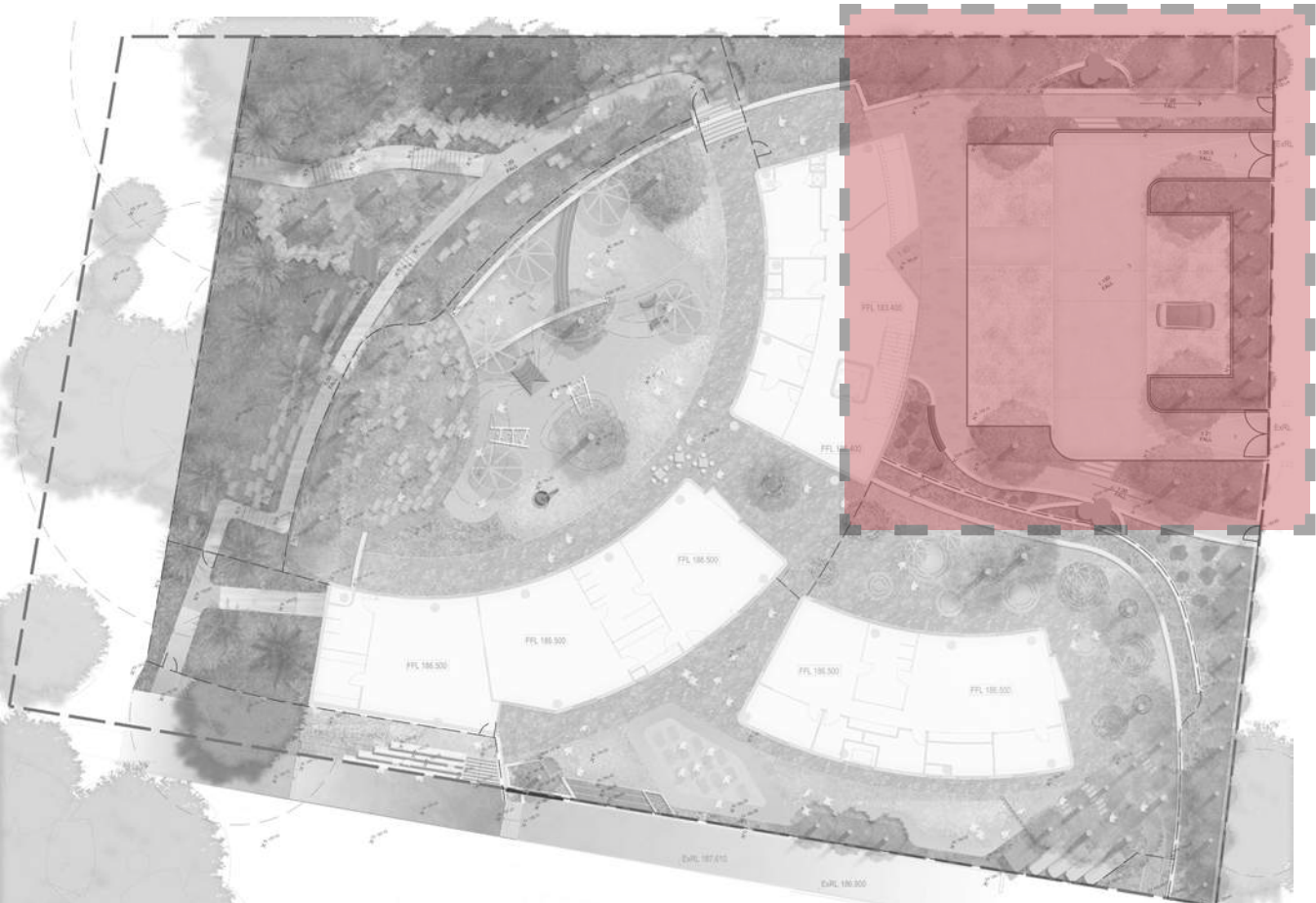
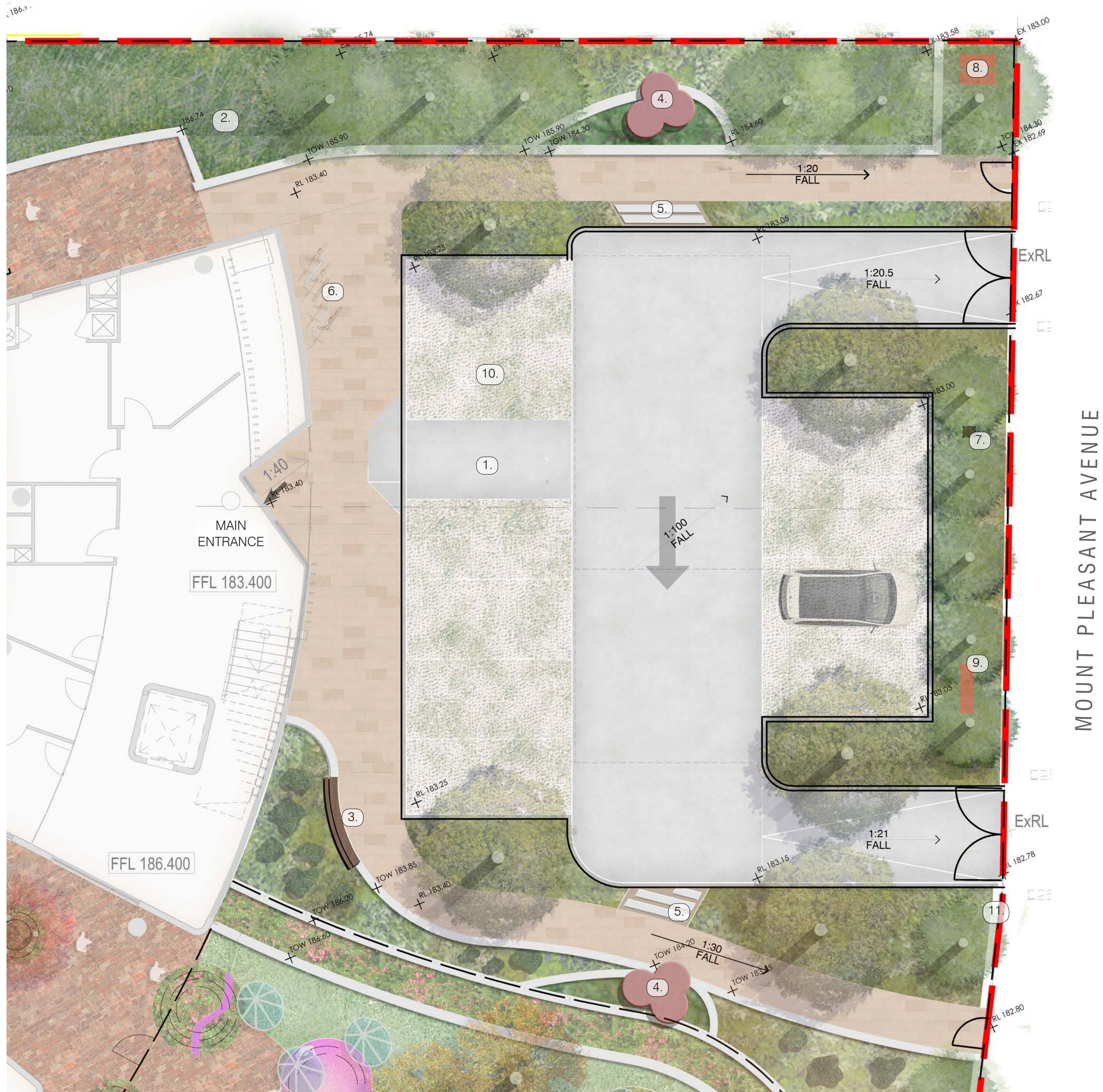
SHEET 1 OF 3

REV B: TIMBER STEPS AND
ELEVATED PATH ADDED OVER TPZ.
1.8m GATE ADDED FOR STAFF
ACCESS ONLY



REV	DATE	STATUS	INITIALS
A	21/11/18	DEVELOPMENT APPLICATION	TM
B	10/07/19	TIMBER STEPS & PATH ADDED	TM

LANDSCAPE PLAN - LOWER GROUND [SHEET 1 OF 3]



KEY PLAN - SHEET 1 OF 3

LEGEND

- EXISTING TREES TO BE RETAINED WITH EXTENT OF TPZ
- PROPOSED TREES
- LOW GROUNDCOVER PLANTING
- ORNAMENTAL PLANTING
- RECYCLED BRICK PAVING
- COLOURED CONCRETE ROAD SURFACE
- 'BRUCE ROCK' GRANITE UNIT PAVING
- PERMEABLE 'TURF GRID' PAVING TO CAR SPACES
- BRICK CLAD BLOCK WORK RETAINING WALL

KEY FEATURES

- Pedestrian link through carpark with accessible ramp
- Access to roof from upper ground level (maintenance only)
- Bench seat on garden wall
- Feature entry sculpture surrounded by 'wild and wonderful' display garden
- Steppers through mass planting for informal pedestrian connection
- Bike racks with capacity for 4 bikes
- WSUD raingarden to treat carpark run off with suitable tree and rush planning
- Gas and water meters
- Fire hydrant booster assembly
- Accessible car space
- Loreto ELC welcome signage

LANDSCAPE PLAN - GROUND [SHEET 2 OF 3]



KEY PLAN - SHEET 2 OF 3

- EXISTING TREES TO BE RETAINED WITH EXTENT OF TPZ
- PROPOSED TREES
- BUSHLAND PLANTING
- ORNAMENTAL PLANTING
- FLORAL FEATURE PLANTING
- ASTRO TURF SOFTFALL
- PLANTED ROCK ESCARPMENT
- RECYCLED BRICK PAVING
- CONCRETE PAVING
- SAND PIT
- ELEVATED TIMBER WALKWAY
- MULCH SURFACE
- RUBBER SOFTFALL MOUNDS
- BRICK CLAD BLOCK WORK RETAINING WALL

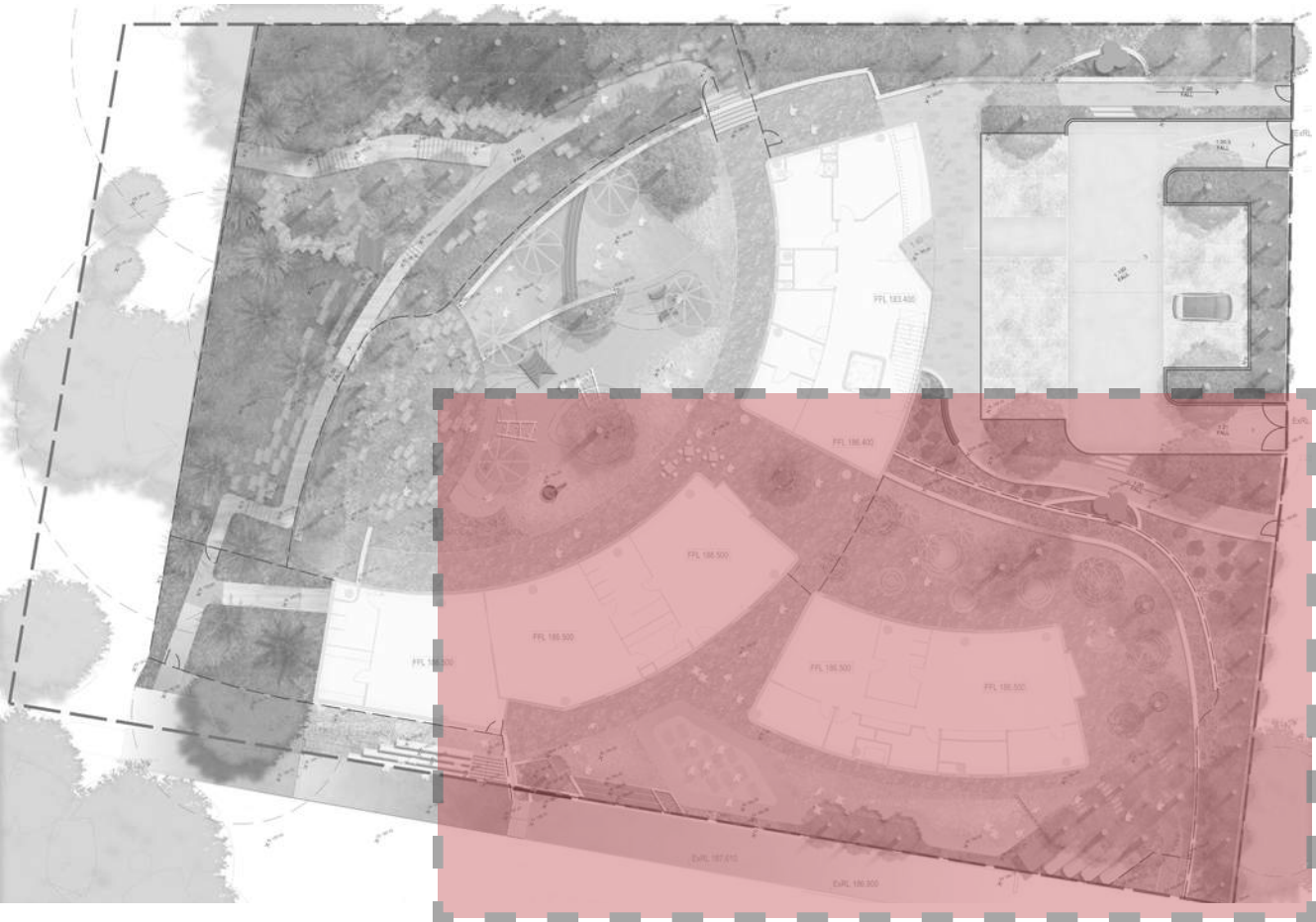
KEY FEATURES

- Feature entry with copse of *Acer 'Sango Kaku'* over lush planting mound
- All abilities basket swing
- Balance beams on soft fall mounding
- Embankment slide for universal access
- Tunnel through soft fall mound
- Feature deciduous tree with circular bench seat around
- Open space for adaptable uses (i.e. moveable furniture, pack away toys and play equipment)
- Sand pit with flush edge to soft fall with universal access digger
- Raised sand pit with zen rockscape for adventurous play
- Architectural shade structures
- Sandstone embankment garden (within fig TPZ) for imaginative and sensory play
- 1.2m high tensile mesh fencing in garden bed between retaining walls
- Mulch surface nature play zone with sandstone log terracing
- Floating timber boardwalk and steps over TPZ leading to gate and staff only access
- Floating timber boardwalk over TPZ of Fig tree
- Boardwalk connection to roof top garden
- Connection to School

REV	DATE	STATUS	INITIALS
A	21/11/18	DEVELOPMENT APPLICATION	TM
B	10/07/19	TIMBER STEPS & PATH ADDED	TM



LANDSCAPE PLAN - GROUND [SHEET 3 OF 3]



KEY PLAN - SHEET 3 OF 3

LEGEND

- EXISTING TREES TO BE RETAINED WITH EXTENT OF TPZ
- PROPOSED TREES
- LOW MAINTENANCE ROOFTOP PLANTING
- WILD AND WONDERFUL PLANT SCAPE
- FLORAL FEATURE PLANTING
- ASTRO TURF SOFTFALL
- RECYCLED BRICK PAVING
- CONCRETE PAVING
- RUBBER SOFTFALL SURFACE
- RUBBER SOFTFALL SURFACE
- BRICK CLAD BLOCK WORK RETAINING WALL

KEY FEATURES

- 29. 1.2m fence with child proof gate
- 30. Low rubber mounds for infant play
- 31. Low planted mounds with rubber surface adventure paths
- 32. Low brick wall to define play space edge and frame garden behind
- 33. Gently undulating toddler bike track
- 34. Timber play platforms beneath woodland accessed via log steppers
- 35. Water reuse plant and rainwater tanks (20,000L storage)
- 36. 'Finishing line' arch over bike track, connecting downpipe to water treatment and storage
- 37. Open astro turf softfall area for adaptable play
- 38. Baby yoga mats in softfall rubber
- 39. Timber bleacher stair up to feature terracotta tile wall with secret cupboards
- 40. Small water play feature to encourage kids to 'draw with water' on the terracotta surface
- 41. Raised planter with small feature tree
- 42. Planted batter (max 1:3) to base of existing wall to maintain existing levels and drainage
- 43. 'Wild and wonderful' planting display with strange and unique living sculpture

REV	DATE	STATUS	INITIALS
A	21/11/18	DEVELOPMENT APPLICATION	TM



LANDSCAPE PLAN - ROOF TERRACE [SHEET 4]

KEY FEATURES

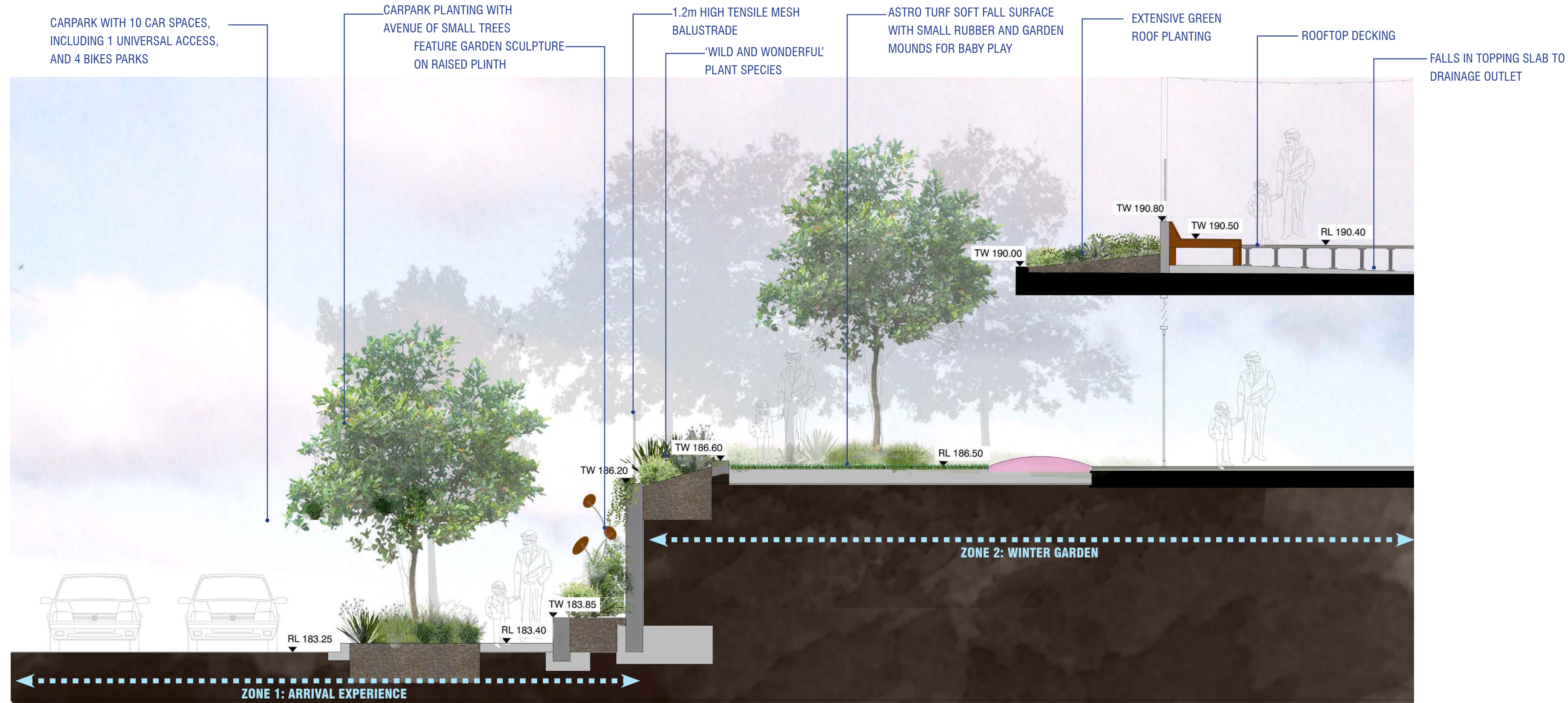
- 44. Lift access from building below
- 45. Feature copse of Acer 'Sango Kaku' emerging up through void in roof
- 46. Photovoltaic panels on gravel surface
- 47. Production garden with raised vegetable planters on astro turf surface
- 48. Timber bleacher seating with stair access overlooking basketball courts
- 49. Universal access path connecting rooftop to school grounds west
- 50. Feature Crepe Myrtles in raised planters to provide shade and seasonal floral display
- 51. Catenary lighting structure over
- 52. Timber stage area for performances and outdoor classroom
- 53. Informal pathways through sensory garden
- 54. Gently undulating gathering space with large day-beds to create diverse seating opportunities

KEY PLAN - SHEET 4

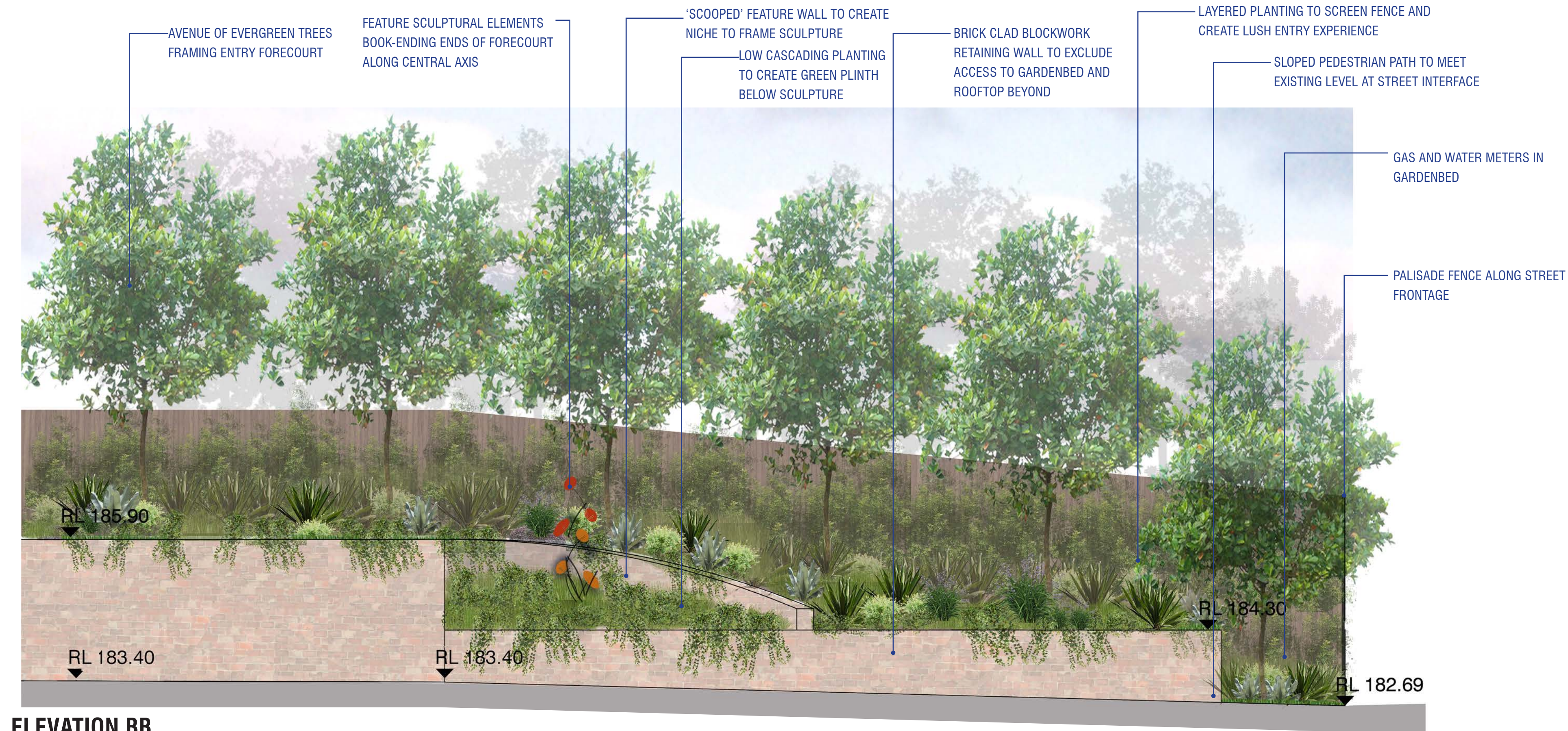
LEGEND

- EXISTING TREES TO BE RETAINED WITH EXTENT OF TPZ
- PROPOSED TREES
- FEATURE COPSE OF ACER 'SANGO KAKU'
- FEATURE GYMEE LILY TO ROOFTOP
- RAISED VEGETABLE PLANTERS
- STEPPERS THROUGH EXTENSIVE ROOFTOP
- BLEACHER SEATING LOOKING OVER BASKETBALL COURTS
- RAISED PLANTERS
- TIMBER DAY BEDS
- ELEVATED TIMBER WALKWAY
- ELEVATED RUBBER SURFACE
- ASTRO TURF SURFACE
- GREEN ROOF WITH FLORAL AND SENSORY PLANTING
- EXTENSIVE GREEN ROOF WITH LOW MAINTENANCE PLANTING
- CONCRETE PATHWAY
- GRAVEL SURFACE
- TERRACE PLANTING ON NATURAL GROUND

REV	DATE	STATUS	INITIALS
A	21/11/18	DEVELOPMENT APPLICATION	TM



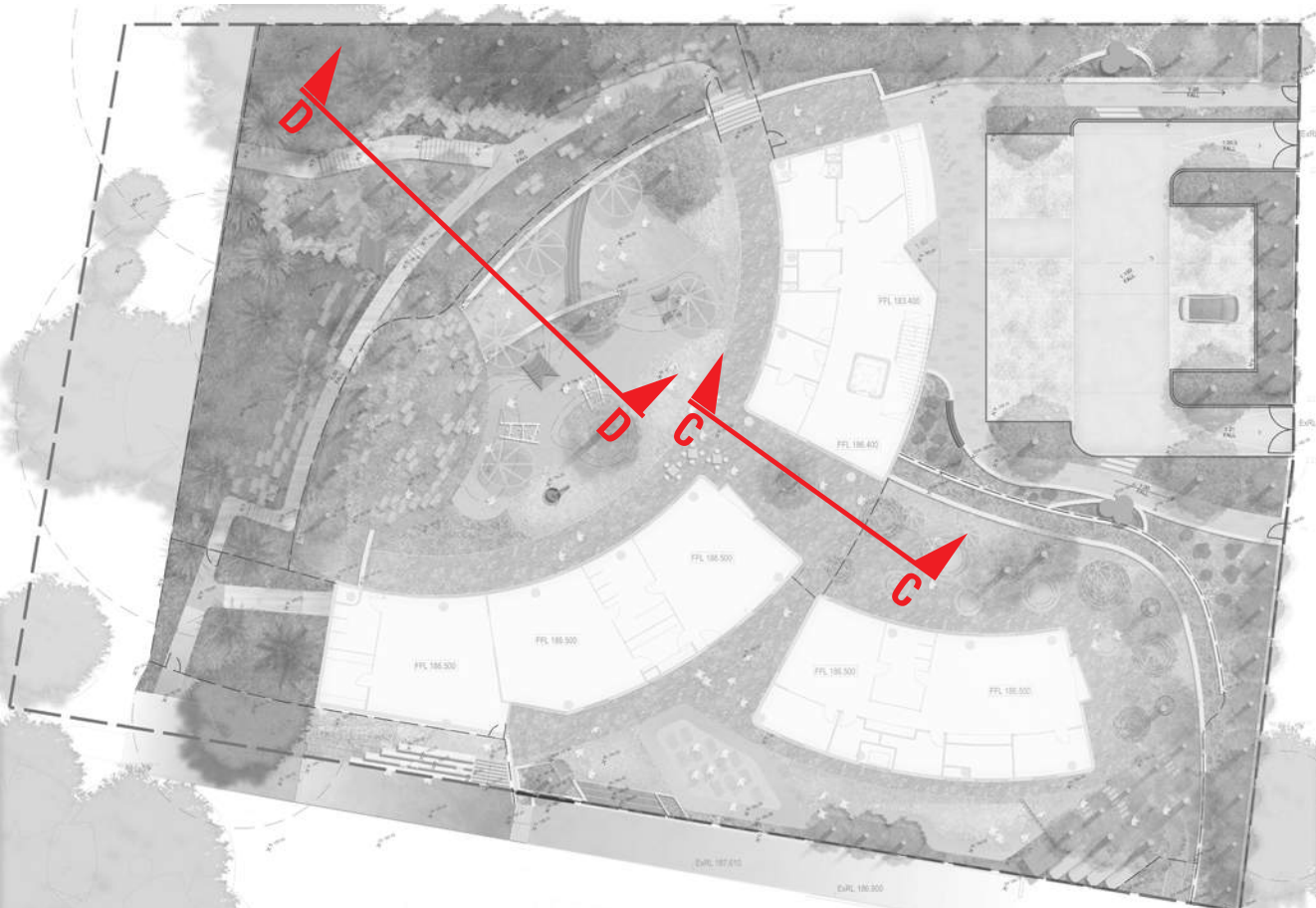
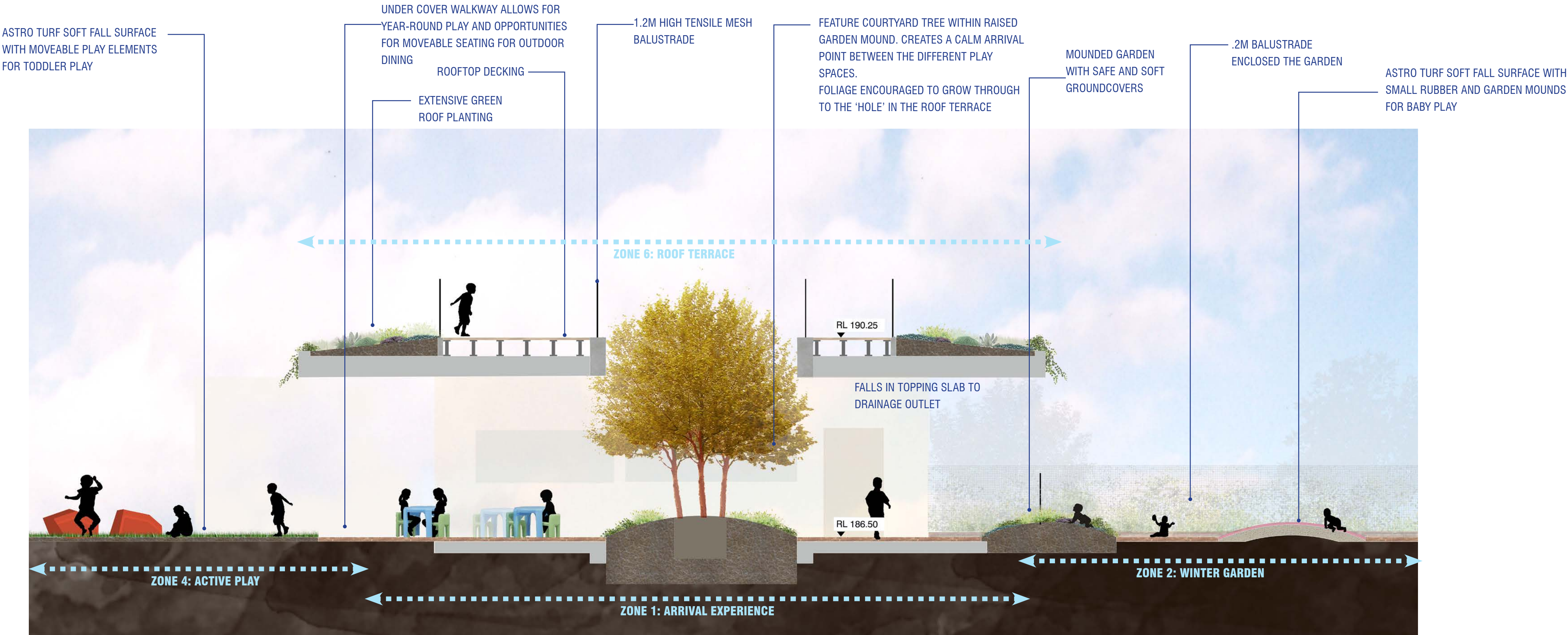
CROSS SECTION AA



ELEVATION BB

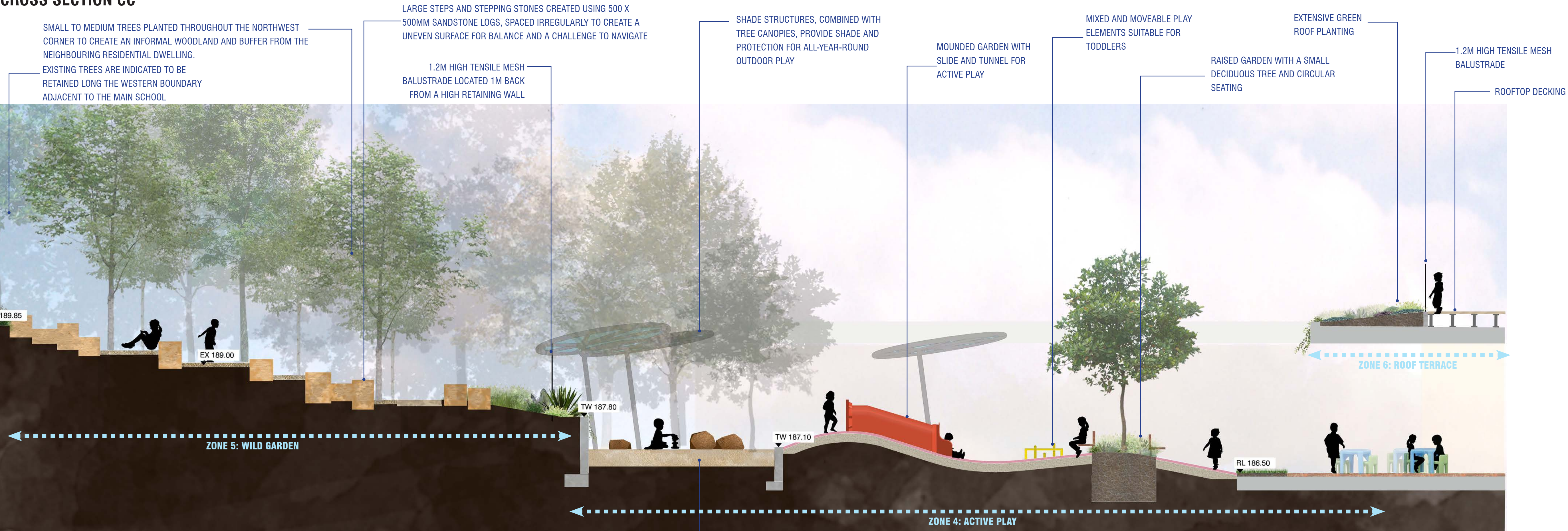


KEY PLAN

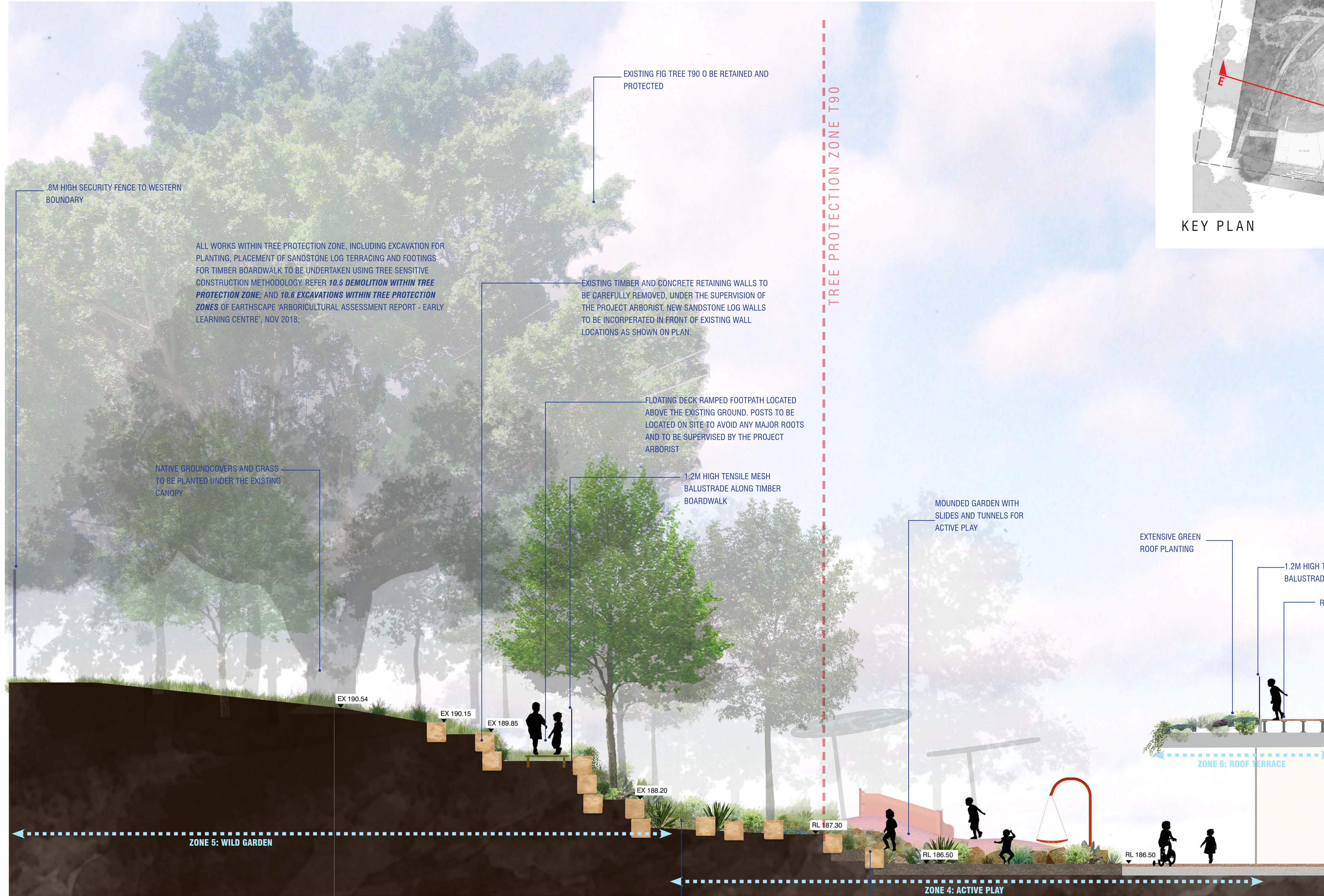


KEY PLAN

CROSS SECTION CC



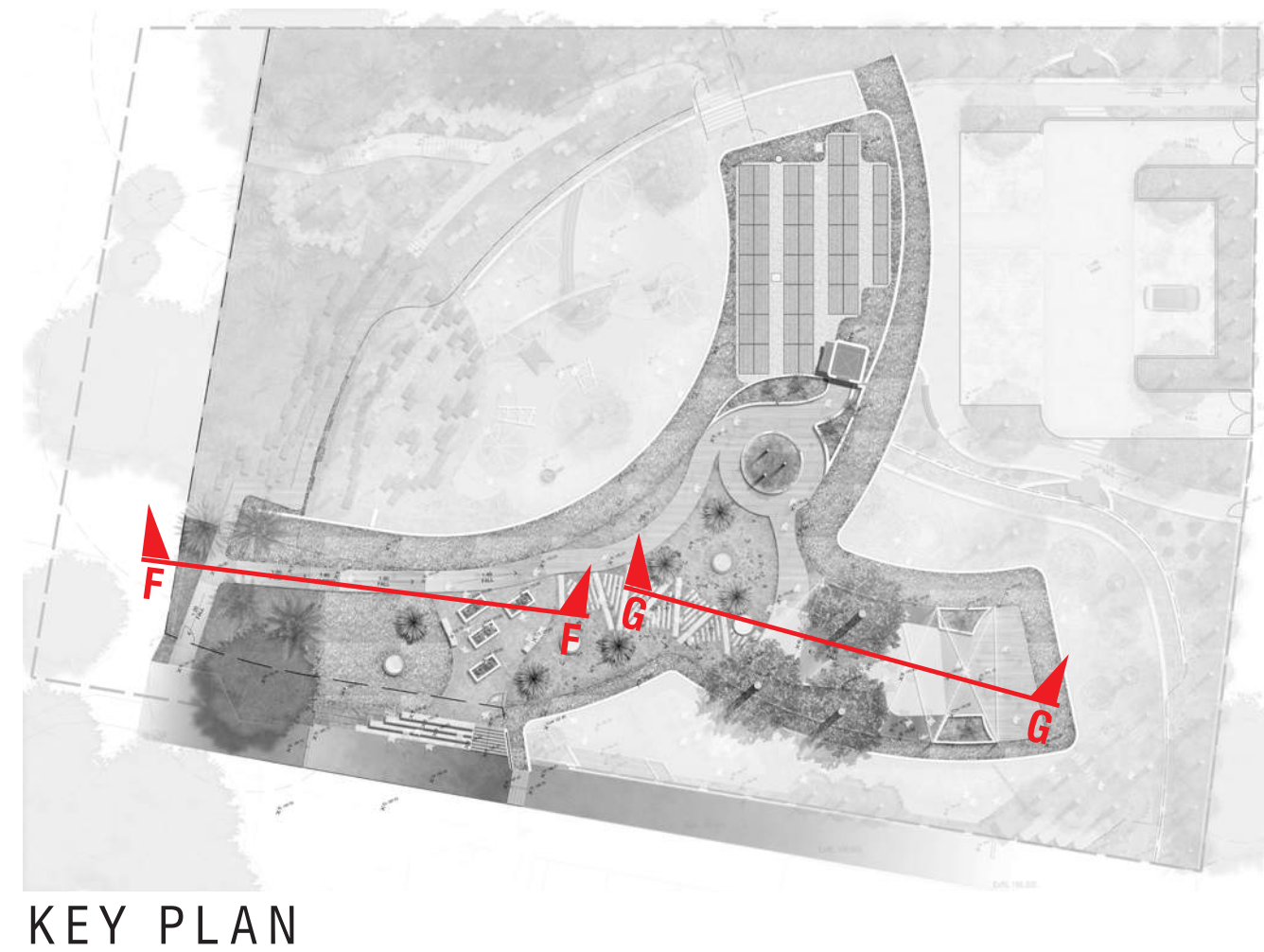
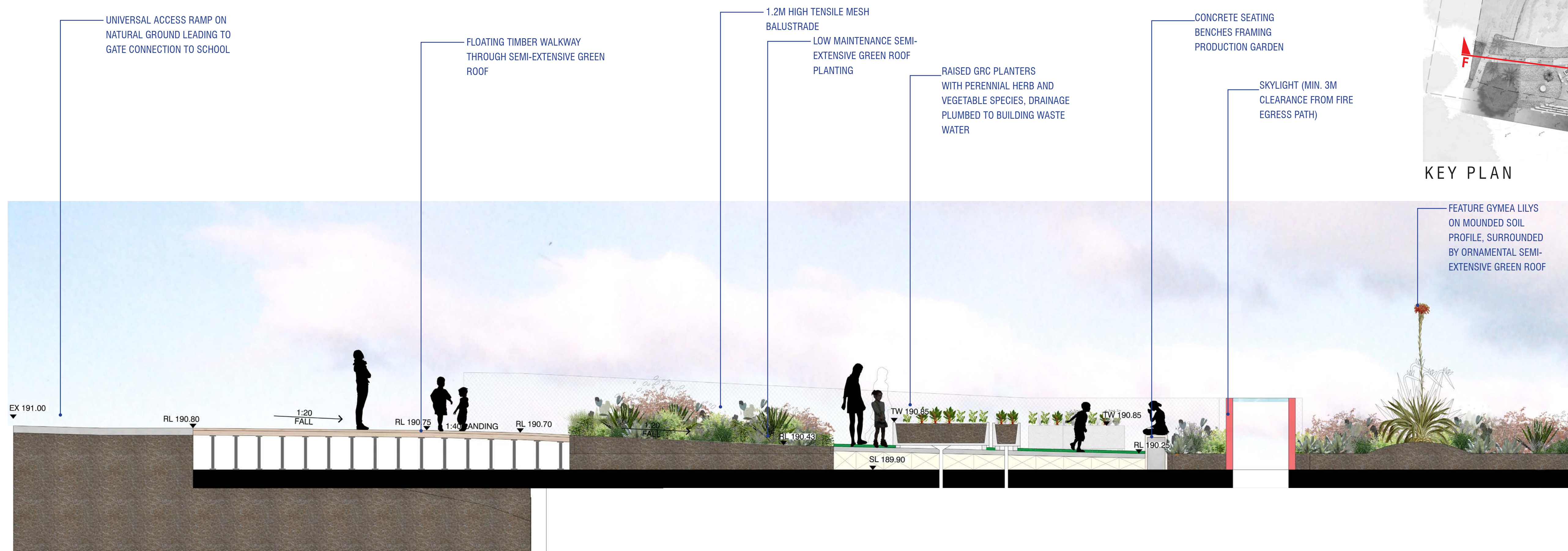
CROSS SECTION DD



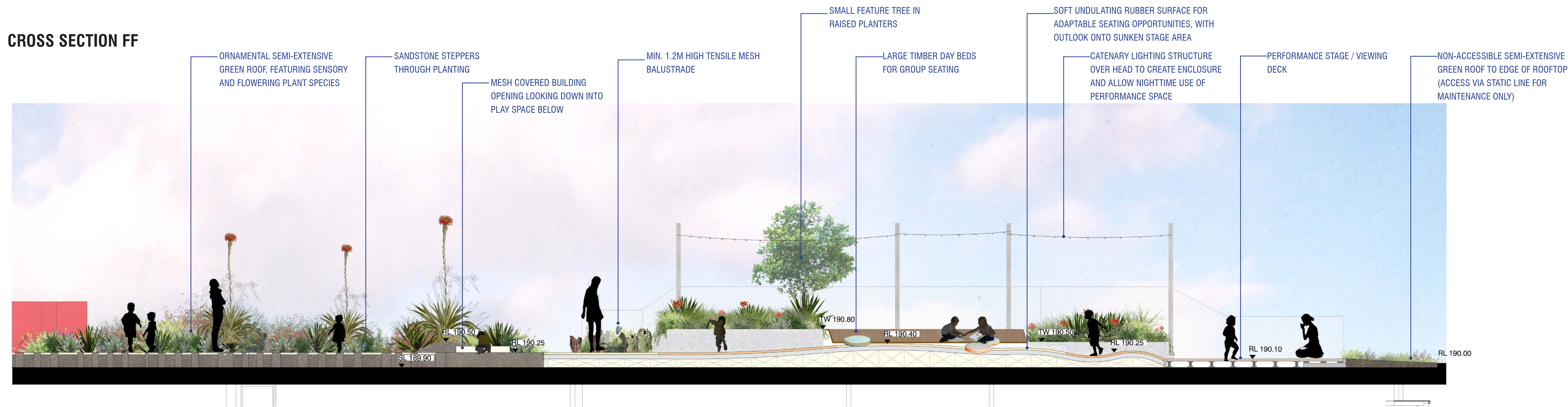
CROSS SECTION EE



KEY PLAN

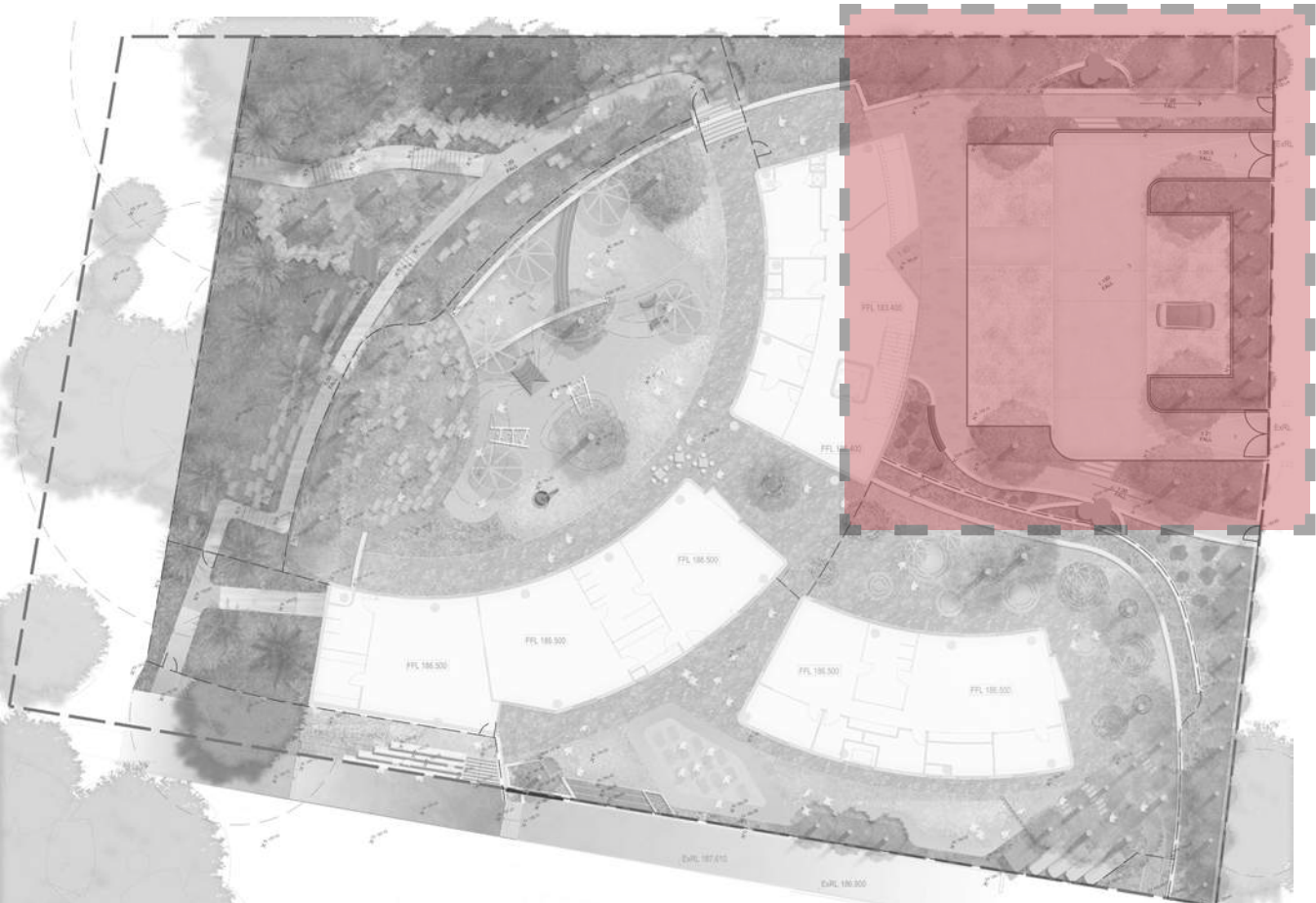


CROSS SECTION FF



CROSS SECTION GG

PLANTING PLAN - LOWER GROUND [SHEET 1 OF 3]

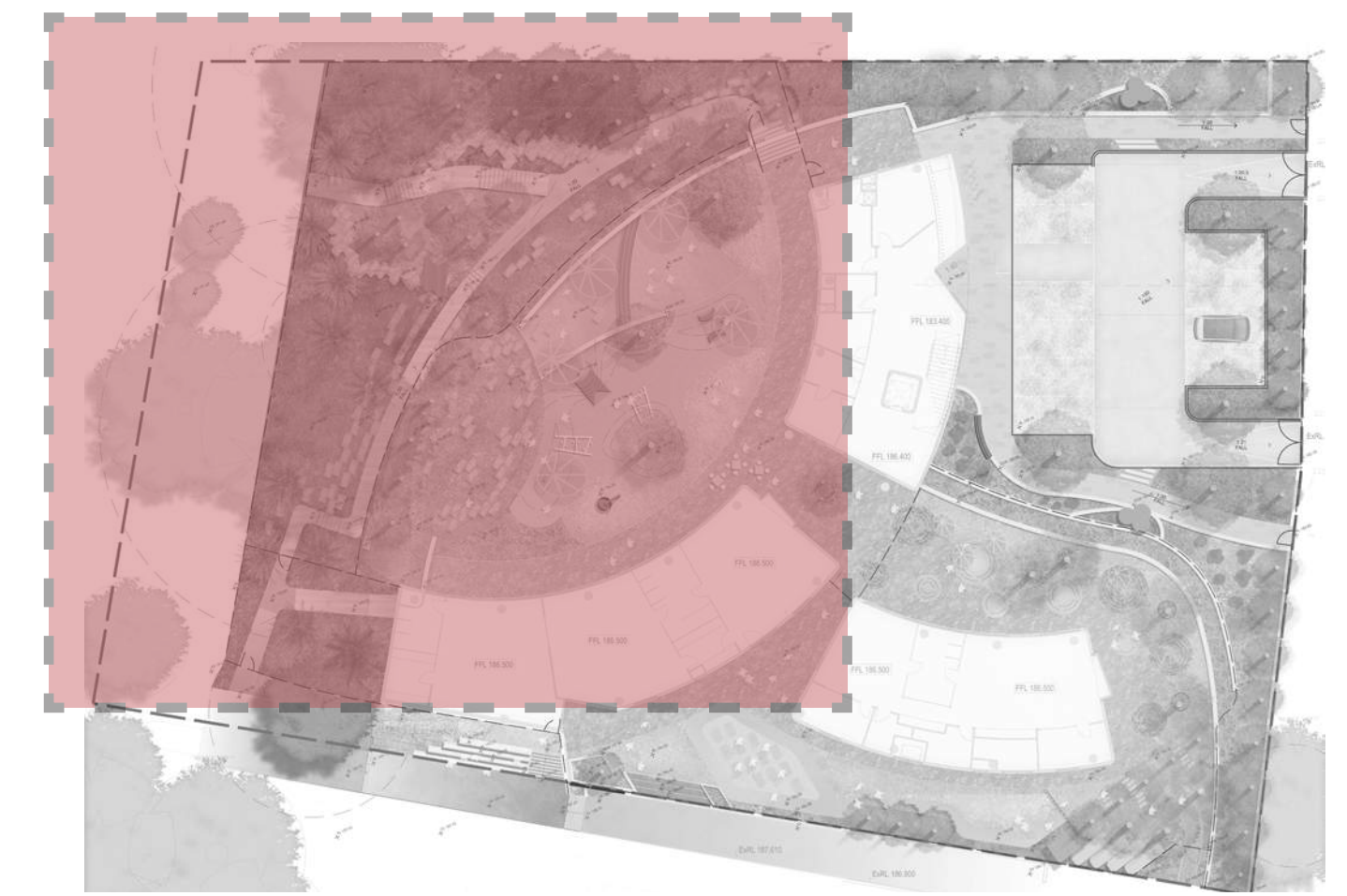


KEY PLAN - SHEET 1 OF 3

Zone 1	LOWER GROUND / CARPARK & ARRIVAL										Total area	
Trees												
VP	Acer palmatum 'Sango Kaku'		Coral Bark Maple	8 x 4m	As shown	400L	n/a	3				
AC	**	Angophora costata	Sydney Red Gum	25 x 18m	As shown	200L	n/a	4				
TL		Tristania laurina	Water Gum	7x5m	As shown	100L	n/a	6				
WF	**	Waterhousea floribunda	Weeping Lilly Pilly	10x5m	As shown	100L	n/a	6				
S	**	Stenocarpus sinuatus	Firewheel tree	15x8m	As shown	100L	n/a	8				
DP1	Ornamental Planting Mix										Area:	216
	Asparagus densiflorus 'Myersii'		Foxtail Fern	0.4x0.4m	3	150mm	25%	270				
	Hebe 'Emerald Green'		Veronica	0.4x0.4m	3	300mm	25%	162				
	Agave attenuata		Foxtail Agave	0.6x0.6m	2	300mm	10%	43				
	Myoporum parvifolium 'Yareena'		Myoporum cultivar	0.1x1.0m	5	150mm	10%	108				
	Dietes iridioides		Fortnight Lily	0.5x0.5m	5	150mm	10%	108				
	Lomandra 'Little Cui'		Lomandra cultivar	0.3x0.3	8	150mm	10%	173				
	Pennisetum alopecuroides 'Nafray'		Dwarf fountain grass	0.5x0.5m	5	150mm	10%	108				
WS1	Water Sensitive Urban Design Planting Mix										Area:	58
	Lomandra 'Katie Belles'		Lomandra cultivar	0.3x0.3	8	150mm	20%	93				
	Juncus effusus		Soft Rush	0.5x0.5m	5	150mm	45%	131				
	Pennisetum alopecuroides 'Nafray'		Dwarf fountain grass	0.5x0.5m	5	150mm	15%	44				
	Nandina domestica 'Obsession'		Nandina cultivar	1.0x1.0m	6	150mm	10%	35				
	Trachelospermum jasminoides		Star Jasmine	0.3x1.0m	4	150mm	10%	23				
M1	Low Maintenance Groundcovers										Area:	11
	Eremophila glabra prostrata 'Blue Horizon'		Eremophila Blue Horizon	0.2x1.0m	2	150mm	20%	4				
	Drosera rot. cap. 'Hispidum'		Miniature Pigs Face	0.3x0.3m	6	150mm	20%	13				
	Liriope muscari 'Silverlawn'		Silver Lawn	0.3x0.4m	6	150mm	20%	13				
	Myoporum parvifolium 'Yareena'		Myoporum cultivar	0.1x1.0m	5	150mm	20%	11				
	Parthenocissus henryana		Silver vein creeper	1.5m x 2.0m	2	150mm	1%	0				
	Trachelospermum jasminoides 'Tricolour'		Star Jasmine	0.3x1.0m	3	150mm	19%	6				

** DENOTES SPECIES LISTED BY ARBORIST AS SUITABLE FOR REPLACEMENT PLANTING

PLANTING PLAN - GROUND [SHEET 2 OF 3]



KEY PLAN - SHEET 2 OF 3

Zone 4	STRUCTURED / ACTIVE PLAY						
	Trees						
AB	<i>Acer buergerianum</i>		Trident Maple	6 x 6m	As shown	100L	2
JP	** <i>Ulmus parvifolia</i>		Chinese Elm	13 x 10m	As shown	100L	1
OP4	Ornamental Planting Mix						
	<i>Phormium cookianum</i> 'tricolor'		Flax	1.0 x 1.0m	1	300mm	5% 2
	<i>Agave attenuata</i>		Foxtail Agave	0.6x0.6m	2	300mm	5% 4
	<i>Acacia cognata</i> 'Umelight'		Bower Wattle	0.4x0.4m	5	300mm	10% 19
	<i>Lomandra</i> 'Katie Belles'		Lomandra cultivar	0.3x0.3	6	150mm	20% 46
	<i>Pennisetum alopecuroides</i> 'Nafray'		Dwarf fountain grass	0.6x0.5m	4	150mm	10% 15
	<i>Carex appressa</i>		Sedge	1.0 x 1.0m	4	150mm	10% 15
	<i>Dietes grandiflora</i>		Fairy Iris	0.8x0.8m	6	150mm	10% 23
	<i>Nandina domestica</i> 'Obsession'		Nandina cultivar	1.0x1.0m	6	150mm	10% 23
	<i>Myoporum parvifolium</i> 'Yareena'		Myoporum cultivar	0.1x1.0m	5	150mm	10% 19
	<i>Trachelospermum jasminoides</i> 'Tricolor'		Tricolor Star Jasmine	0.3x1.0m	4	150mm	10% 15
	Grass Planting Mix						
	<i>Lomandra</i> 'Little Can'		Lomandra cultivar	0.3x0.3	6	150mm	20% 96
	<i>Carex appressa</i>		Sedge	1.0 x 1.0m	4	150mm	20% 64
	<i>Dietes grandiflora</i>		Fairy Iris	0.8x0.8m	6	150mm	20% 96
	<i>Pennisetum alopecuroides</i> 'Nafray'		Dwarf fountain grass	0.5x0.5m	5	150mm	20% 80
SP4	<i>Cuscutra glauca</i> 'Cousin it'		Sheoak 'Cousin it'	0.3x1.0m	3	150mm	20% 48
	Groundcovers & Shrub Planting Mix						
	<i>Agapanthus orientalis</i> 'Cloudy Days'		Agapanthus	1.0x0.8m	4	150mm	20% 34
	<i>Clivia miniata</i>		kaffir lily	1.0x1.0m	4	150mm	20% 34
	<i>Philodendron</i> 'Xanadu'		Philodendron cultivar	1.0x1.0m	4	150mm	20% 34
	<i>Trachelospermum jasminoides</i> 'Tricolor'		Star Jasmine	0.3x1.0m	4	150mm	25% 43
	<i>Grevillea</i> 'hannah'		Grevillea 'hannah'	1.2 x 1.5m	1	300mm	5% 2
	<i>Callistemon viminalis</i> 'Slim'		Callistemon cultivar	1.3m x 3m	1	300mm	10% 4

Zone 5	WILD GARDEN								
	Trees								
3C	** <i>Backhausia citriodora</i>	Lemon Scented Myrtle	6x4m	As shown	100L	as shown	11		
3C	** <i>Cyathea cooperi</i>	Lacy Tree Fern	5x3m	As shown	75L	as shown	4		
4T	** <i>Hibiscus tiliaceus</i>	Native Hibiscus	6x4m	As shown	75L	as shown	3		
5S	** <i>Stenocarpus sinuatus</i>	Firewheel tree	15x8m	As shown	100L	as shown	4		
ER	** <i>Elaeocarpus reticulatus</i>	Blueberry Ash	10x5m	As shown	100L	as shown	7		
OPS	Ornamental Planting Mix					Area:	90		
	<i>Casuarina glauca</i> 'Cousin It'	Sheep's 'Cousin It'	0.3x1.0m	3	150mm	15%	36		
	<i>Correa reflexa</i> 'Triviale'	Native Fuchsia	0.5x2.0m	1	150mm	20%	18		
	<i>Lomandra</i> 'Tanika'	Lomandra cultivar	0.5x0.5m	5	150mm	20%	90		
	<i>Callistemon</i> 'Little John'	Callistemon	1.2 x 1.5m	1	300mm	20%	18		
	<i>Grevillea rhytidolia</i> x <i>juniperina</i>	Grevillea Cherry Cluster	0.5x0.8m	4	150mm	15%	72		
	<i>Hibbertia scandens</i>	Snake Vine	0.3x1.0m	5	150mm	10%	45		
GPS	Groundcovers & Shrub Planting Mix					Area:	120		
	<i>Hardenbergia violacea</i> 'Meena'	Happy Wanderer	0.5x1.5m	3	150mm	20%	72		
	<i>Lomandra</i> 'Katie Belles'	Lomandra cultivar	0.3x0.3	6	150mm	20%	144		
	<i>Grevillea rosmarinifolia</i>	Rosmaryn Grevillea	1.2 x 1.5m	1	150mm	20%	24		
	<i>Hibbertia scandens</i>	Snake Vine	0.3x1.0m	5	150mm	20%	120		
	<i>Trachelospermum jasminoides</i> 'Tricolour'	Star Jasmine	0.3x1.0m	4	150mm	20%	96		
GMS	Grass Planting Mix					Area:	35		
	<i>Agave attenuata</i>	Foxtail Agave	0.6x0.6m	2	300mm	5%	4		
	<i>Lomandra</i> 'Little Con'	Lomandra cultivar	0.3x0.3	6	150mm	25%	53		
	<i>Carex appressa</i>	Sedge	1.0 x 1.0m	4	150mm	25%	35		
	<i>Dianella revoluta</i> 'Little Rev'	Fairy Iris	0.3x0.3	6	150mm	20%	42		
	<i>Pennisetum alopecuroides</i> 'Najray'	Dwarf fountain grass	0.5x0.5m	5	150mm	25%	44		
LMS	Low Maintenance Groundcovers					Area:	80		
	<i>Grevillea</i> 'Gaudichaudii'	Prostrate Grevillea	0.3x0.3m	5	150mm	35%	140		
	<i>Trachypogon perfoliatus</i>	Chinese Star Jasmine	0.3x1.0m	4	150mm	30%	96		
	<i>Grevillea pinnatifida</i> 'Royal mantle'	Grevillea Royal Mantle	0.5x1.0m	4	150mm	35%	112		

**** DENOTES SPECIES LISTED BY ARBORIST AS SUITABLE FOR REPLACEMENT PLANTING**

LANDSCAPE PLAN - GROUND [SHEET 3 OF 3]



KEY PLAN - SHEET 3 OF 3



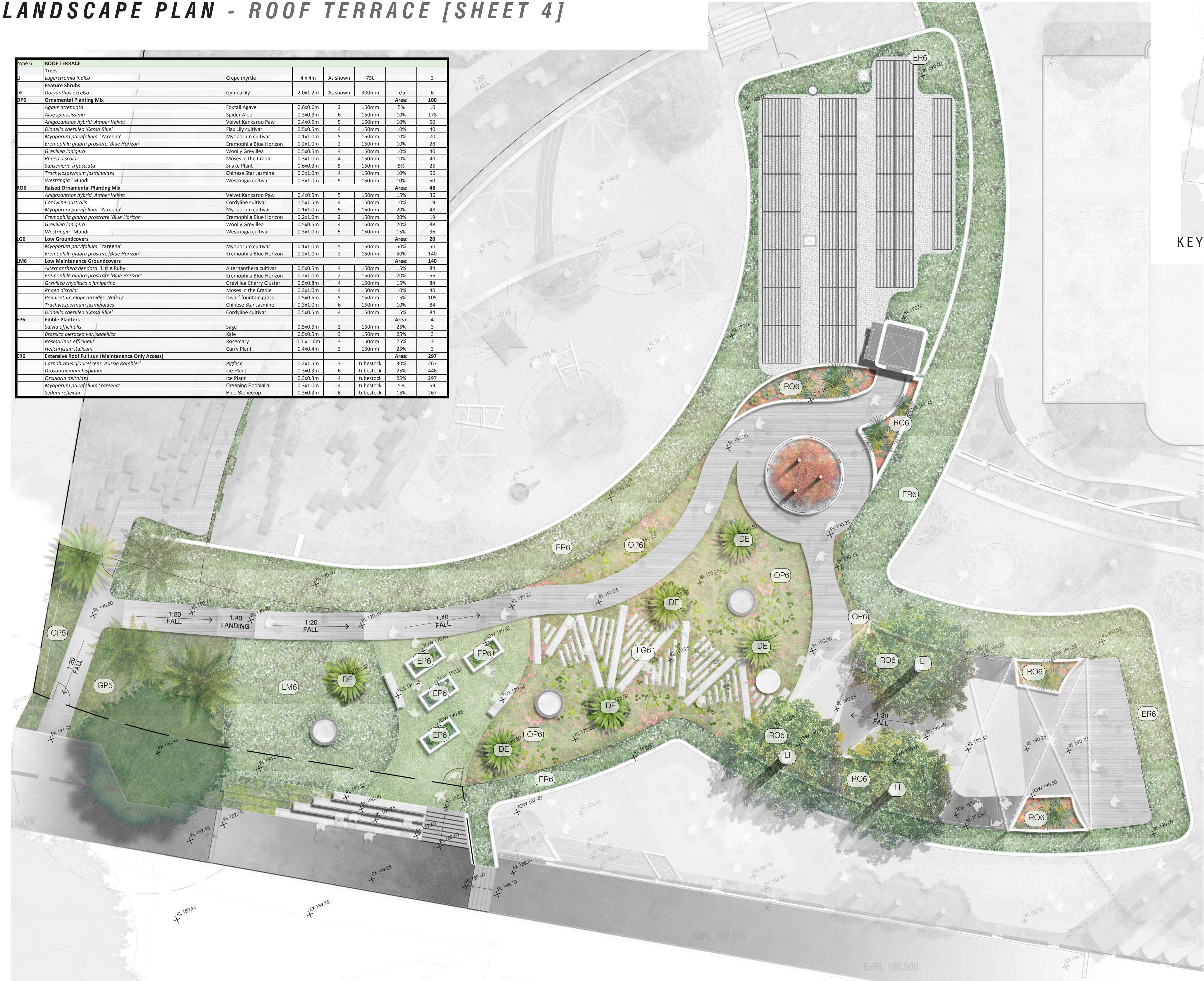
Zone 2 WINTER GARDEN									
Trees									
JM	**	Jacaranda mimosaefolia	Jacaranda	12x7m	As shown	100L	as shown	4	
Ornamental Planting Mix									
OP2		Acacia cognata 'Limelight'	Bower Wattle	0.4x0.4m	5	300mm	10%	19	
		Alternanthera dentata	White Correa	0.3x1.5m	3	150mm	5%	6	
		Carrea alba	Purple Fountain Grass	0.5x0.5m	2	150mm	10%	8	
		Pennisetum alopecuroides 'Purple Lea'	Blue Fescue	0.5x0.5m	5	150mm	20%	38	
		Festuca glauca	Licorice Plant	0.3x0.3m	6	150mm	10%	23	
		Helichrysum petiolar	French Lavender	0.4x1.4m	4	150mm	20%	30	
		Lavandula dentata	Sage	0.5x0.5m	5	150mm	10%	19	
		Salvia officinalis	Woolly Grevillea	0.3x1.0m	4	150mm	5%	8	
		Grevillea lanigera		0.5x0.5m	4	150mm	10%	15	
GP2		Groundcovers Planting Mix					Area:	33	
		Festuca glauca	Blue Fescue	0.3x0.3m	6	150mm	25%	50	
		Helichrysum petiolar	Licorice Plant	0.4x1.4m	4	150mm	25%	33	
		Plectranthus argentatus	Silver Plectranthus	0.3x1.0m	3	150mm	25%	25	
		Trachelospermum jasminoides 'Tricolour'	Star Jasmine	0.3x1.0m	3	150mm	25%	25	
JM2		Low Maintenance Groundcovers (undercroft)						3	
		Trachelospermum jasminoides 'Tricolour'	Star Jasmine	0.3x1.0m	3	150mm	50%	5	
		Plectranthus argentatus	Silver Plectranthus	0.3x1.0m	3	150mm	50%	5	

Zone 3 SUMMER GARDEN									
Trees									
HF		Hymenosporum flavum	Native Frangipani	8 x 4m	As shown	100L	as shown	3	
Bce		Buckinghamia celisissima	Ivory curl	5x3m	As shown	100L	as shown	10	
Ornamental Planting Mix									
OP3		Cordyline 'Rubra'	Cordyline cultivar	1.5x1.5m	3	150mm	15%	19	
		Plectranthus argentatus	Silver Plectranthus	1.2 x 1.5m	4	150mm	20%	34	
		Clivia miniata	Kaffir lily	1.0x1.0m	4	150mm	15%	25	
		Liriope muscaris 'Evergreen Giant'	Silver Lawn	0.3x0.3m	6	150mm	10%	25	
		Nandina domestica 'Obsession'	Nandina cultivar	0.8x1.0m	4	150mm	20%	34	
		Pennisetum alopecuroides 'Purple Lea'	Purple Fountain Grass	0.5x0.5m	5	150mm	5%	11	
		Ctenanthe setosa 'Grey Star'	Ctenanthe cultivar	1.0 x 1.5m	4	150mm	15%	25	
GP3		Groundcovers & Climbers Planting Mix					Area:	30	
		Alternanthera dentata	Soft water fern	0.3x1.5m	3	150mm	15%	14	
		Blechnum cartilagineum	Moses in the Cradle	0.6x0.6m	4	150mm	15%	18	
		Rhoeo discolor	Philodendron cultivar	0.3x1.0m	4	150mm	15%	60	
		Philodendron 'Xanadu'	Star Jasmine	1.0x1.0m	4	150mm	29%	35	
		Trachelospermum jasminoides 'Tricolour'	Silver vein creeper	0.3x1.0m	4	150mm	25%	30	
		Parthenocissus henryana		1.5m x 2.0m	2	150mm	1%	1	

** DENOTES SPECIES LISTED BY ARBORIST AS SUITABLE FOR REPLACEMENT PLANTING

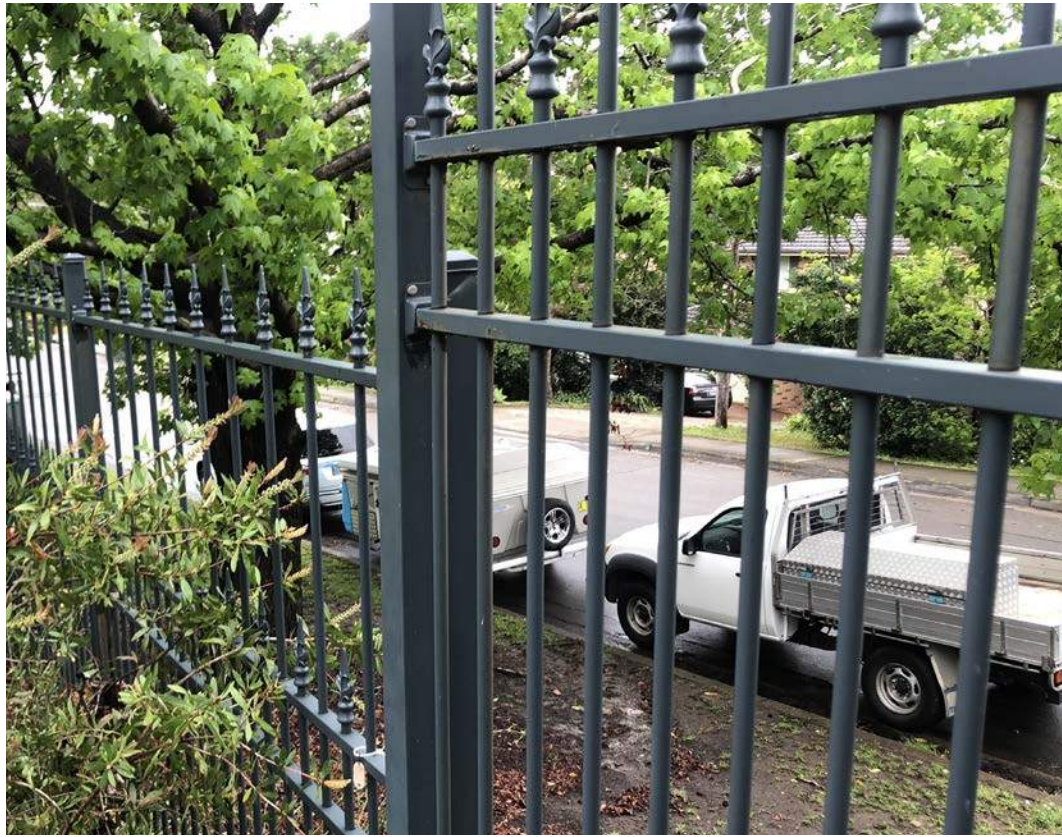
LANDSCAPE PLAN - ROOF TERRACE [SHEET 4]

Zone 6 ROOF TERRACE							
J	Trees						
	Lagerstromia indica		Crepe myrtle	4 x 4m	As shown	75L	3
JC	Feature Shrubs						
	Doryanthes racemosa		Gymea lily	2.0x1.2m	As shown	300mm	n/a
DP6	Ornamental Planting Mix						Area: 100
	Agave attenuata		Foxtail Agave	0.6x0.6m	2	150mm	5%
	Aloe spinosissima		Spider Aloe	0.3x0.3m	6	150mm	10%
	Anigozanthos hybrid 'Amber Velvet'		Velvet Kankaroo Paw	0.4x0.5m	5	150mm	10%
	Dianella caerulea 'Cassa Blue'		Flax Lily cultivar	0.5x0.5m	4	150mm	10%
	Myoporum parvifolium 'Yareena'		Myoporum cultivar	0.1x1.0m	5	150mm	10%
	Eremophila glabra prostrata 'Blue Horizon'		Eremophila Blue Horizon	0.2x1.0m	2	150mm	10%
	Grevillea lanigera		Woolly Grevillea	0.5x0.5m	4	150mm	10%
	Rhoeo discolor		Moses in the Cradle	0.3x1.0m	4	150mm	10%
	Sansevieria trifasciata		Snake Plant	0.6x0.3m	5	150mm	5%
	Trachyspermum jasminoides		Chinese Star Jasmine	0.3x1.0m	4	150mm	10%
	Westringia 'Mundi'		Westringia cultivar	0.3x1.0m	5	150mm	10%
RO6	Raised Ornamental Planting Mix						Area: 48
	Anigozanthos hybrid 'Amber Velvet'		Velvet Kankaroo Paw	0.4x0.5m	5	150mm	15%
	Cordyline australis		Cordyline cultivar	1.5x1.5m	4	150mm	10%
	Myoporum parvifolium 'Yareena'		Myoporum cultivar	0.1x1.0m	5	150mm	20%
	Eremophila glabra prostrata 'Blue Horizon'		Eremophila Blue Horizon	0.2x1.0m	2	150mm	20%
	Grevillea lanigera		Woolly Grevillea	0.5x0.5m	4	150mm	20%
	Westringia 'Mundi'		Westringia cultivar	0.3x1.0m	5	150mm	15%
LG6	Low Groundcovers						Area: 20
	Myoporum parvifolium 'Yareena'		Myoporum cultivar	0.1x1.0m	5	150mm	50%
	Eremophila glabra prostrata 'Blue Horizon'		Eremophila Blue Horizon	0.2x1.0m	2	150mm	50%
M6	Low Maintenance Groundcovers						Area: 140
	Alternanthera dendata 'Little Ruby'		Alternanthera cultivar	0.5x0.5m	4	150mm	15%
	Eremophila glabra prostrata 'Blue Horizon'		Eremophila Blue Horizon	0.2x1.0m	2	150mm	20%
	Grevillea rhytidota x juniperina		Grevillea Cherry Cluster	0.5x0.8m	4	150mm	15%
	Rhoeo discolor		Moses in the Cradle	0.3x1.0m	4	150mm	10%
	Pennisetum alopecuroides 'Nufra'		Dwarf fountain grass	0.5x0.5m	5	150mm	15%
	Trachyspermum jasminoides		Chinese Star Jasmine	0.3x1.0m	6	150mm	10%
	Dianella caerulea 'Cassa Blue'		Cordyline cultivar	0.5x0.5m	4	150mm	15%
EP6	Edible Planters						Area: 4
	Salvia officinalis		Sage	0.5x0.5m	3	150mm	25%
	Brassica oleracea var. sabellica		Kale	0.5x0.5m	3	150mm	25%
	Rosmarinus officinalis		Rosemary	0.1 x 1.0m	3	150mm	25%
	Helichrysum italicum		Curry Plant	0.4x0.4m	3	150mm	25%
ER6	Extensive Roof Fall sun (Maintenance Only Access)						Area: 297
	Carpobrotus glaucescens 'Aussie Rambler'		Pigface	0.2x1.5m	3	tubestock	30%
	Drosera rotundifolia		Ice Plant	0.3x0.3m	6	tubestock	25%
	Oscularia deltoides		Ice Plant	0.3x0.3m	4	tubestock	25%
	Myoporum parvifolium 'Yareena'		Creeping Boobialla	0.3x1.0m	4	tubestock	5%
	Sedum reflexum		Blue Stonecrop	0.3x0.3m	6	tubestock	15%



KEY PLAN - SHEET 4

INDICATIVE MATERIALS - PALETTE



1.8m Security Fence to Mount Pleasant St frontage - to match existing



1.8m Tensile Steel Mesh Security Fence



1.2m Tensile Steel Mesh Balustrade Fence



1.8m Timber Paling Fence



Blockwork Retaining Walls Clad in Recycled Brick



Brick Paving



Rubber Softfall - Play Surface



Synthetic Turf / Play Surface



Concrete and Turfgrid paving surfaces



Raised Decking



Sandstone Log Low Retaining Wall / Terrace



Sandstone Log Stepping Stone / Steps in Bark Mulch



Stepping Stones in planting



Raised Planters for learning how to growing edible plants



Steel Cubby



Sandpit & Rocks / Natural Play



Log Stepping Stones / Natural Play



All Abilities Access Basket Swing



Tunnel in rubber softfall



Double Slide on mound

INDICATIVE PLANT SCHEDULE

AREA / CODE	SPECIES	COMMON NAME	MATURE SIZE (HxW)	DENSITY /SQ.M	POT SIZE	% IN MIX	QUANTITY
Zone 1 LOWER GROUND / CARPARK & ARRIVAL							Total area
Trees							
AP	<i>Acer palmatum 'Sango Kaku'</i>	Coral Bark Maple	8 x 4m	As shown	400L	n/a	1
AC	<i>Angophora costata</i>	Sydney Red Gum	25 x 18m	As shown	200L	n/a	2
TL	<i>Tristanopsis laurina</i>	Water Gum	7x5m	As shown	100L	n/a	
WF	<i>Waterhousea floribunda</i>	Weeping Lilly Pilly	10x5m	As shown	100L	n/a	
SS	<i>Stenocarpus sinuatus</i>	Firewheel tree	15x8m	As shown	100L	n/a	
OP1 Ornamental Planting Mix							Area: 216
	<i>Asparagus densiflorus 'Myersii'</i>	Foxtail Fern	0.4x0.4m	5	150mm	25%	270
	<i>Hebe 'Emerald Green'</i>	Veronica	0.4x0.4m	3	300mm	25%	162
	<i>Agave attenuata</i>	Foxtail Agave	0.6x0.6m	2	300mm	10%	43
	<i>Myoporum parvifolium 'Yareena'</i>	Myoporum cultivar	0.1x1.0m	5	150mm	10%	108
	<i>Diets iridioides</i>	Fortnight Lily	0.5x0.5m	5	150mm	10%	108
	<i>Lomandra 'Little Con'</i>	Lomandra cultivar	0.3x0.3	8	150mm	10%	173
	<i>Pennisetum alopecuroides 'Nafray'</i>	Dwarf fountain grass	0.5x0.5m	5	150mm	10%	108
WS1 Water Sensitive Urban Design Planting Mix							Area: 58
	<i>Lomandra 'Katie Belles'</i>	Lomandra cultivar	0.3x0.3	8	150mm	20%	93
	<i>Juncus effusus</i>	Soft Rush	0.5x0.5m	5	150mm	45%	131
	<i>Pennisetum alopecuroides 'Nafray'</i>	Dwarf fountain grass	0.5x0.5m	5	150mm	15%	44
	<i>Nandina domestica 'Obsession'</i>	Nandina cultivar	1.0x1.0m	6	150mm	10%	35
	<i>Trachelospermum jasminoides</i>	Star Jasmine	0.3x1.0m	4	150mm	10%	23
LM1 Low Maintenance Groundcovers							Area: 11
	<i>Eremophila glabra prostrata 'Blue Horizon'</i>	Eremophila Blue Horizon	0.2x1.0m	2	150mm	20%	4
	<i>Drosera</i>	Miniature Pigs Face	0.3x0.3m	6	150mm	20%	13
	<i>Liriope muscari 'Silverlawn'</i>	Silver Lawn	0.3x0.4m	6	150mm	20%	13
	<i>Myoporum parvifolium 'Yareena'</i>	Myoporum cultivar	0.1x1.0m	5	150mm	20%	11
	<i>Parthenocissus henryana</i>	Silver vein creeper	1.5m x 2.0m	2	150mm	1%	0
	<i>Trachelospermum jasminoides 'Tricolour'</i>	Star Jasmine	0.3x1.0m	3	150mm	19%	6
Zone 2 WINTER GARDEN							
Trees							
HF	<i>Hymenosporum flavum</i>	Native Frangipani	8 x 4m	As shown	100L	n/a	4
OP2 Ornamental Planting Mix							Area: 38
	<i>Acacia cognata 'Limelight'</i>	Bower Wattle	0.4x0.4m	5	300mm	10%	19
	<i>Alternanthera dentata</i>	Alternanthera	0.3x1.5m	3	150mm	5%	6
	<i>Correa alba</i>	White Correa	0.5x0.5m	2	150mm	10%	8
	<i>Pennisetum alopecuroides 'Purple Lea'</i>	Purple Fountain Grass	0.5x0.5m	5	150mm	20%	38
	<i>Festuca glauca</i>	Blue Fescue	0.3x0.3m	6	150mm	10%	23
	<i>Helichrysum petiolare</i>	Licorice Plant	0.4x1.4m	4	150mm	20%	30
	<i>Lavandula dentata</i>	French Lavender	0.5x0.5m	5	150mm	10%	19
	<i>Salvia officinalis</i>	Sage	0.3x1.0m	4	150mm	5%	8
	<i>Grevillea lanigera</i>	Woolly Grevillea	0.5x0.5m	4	150mm	10%	15
GP2 Groundcovers Planting Mix							Area: 33
	<i>Festuca glauca</i>	Blue Fescue	0.3x0.3m	6	150mm	25%	50
	<i>Helichrysum petiolare</i>	Licorice Plant	0.4x1.4m	4	150mm	25%	33
	<i>Plectranthus argentatus</i>	Silver Plectranthus	0.3x1.0m	3	150mm	25%	25
	<i>Trachelospermum jasminoides 'Tricolour'</i>	Star Jasmine	0.3x1.0m	3	150mm	25%	25
LM2 Low Maintenance Groundcovers (undercroft)							3
	<i>Trachelospermum jasminoides 'Tricolour'</i>	Star Jasmine	0.3x1.0m	3	150mm	50%	5
	<i>Plectranthus argentatus</i>	Silver Plectranthus	0.3x1.0m	3	150mm	50%	5
Zone 3 SUMMER GARDEN							
Trees							
Bce	<i>Buckinghamia celsissima</i>	Ivory Curl	8 x 4m	As shown	100L	n/a	
HF	<i>Hymenosporum flavum</i>	Native Frangipani	8 x 4m	As shown	100L	n/a	
EE	<i>Elaeocarpus eumundii</i>	Eumundi Quandong	10x4m	As shown	100L	n/a	
OP3 Ornamental Planting Mix							Area: 42
	<i>Cordyline 'Rubra'</i>	Cordyline cultivar	1.5x1.5m	3	150mm	15%	19
	<i>Plectranthus argentatus</i>	Silver Plectranthus	1.2 x 1.5m	4	150mm	20%	34
	<i>Clivia miniata</i>	Kaffir lily	1.0x1.0m	4	150mm	15%	25
	<i>Liriope muscari 'Evergreen Giant'</i>	Silver Lawn	0.3x0.3m	6	150mm	10%	25
	<i>Nandina domestica 'Obsession'</i>	Nandina cultivar	0.8x1.0m	4	150mm	20%	34
	<i>Pennisetum alopecuroides 'Purple Lea'</i>	Purple Fountain Grass	0.5x0.5m	5	150mm	5%	11
	<i>Ctenanthe setosa 'Grey Star'</i>	Ctenanthe cultivar	1.0 x1.5m	4	150mm	15%	25
GP3 Groundcovers & Climbers Planting Mix							Area: 30
	<i>Alternanthera dentata</i>	Alternanthera	0.3x1.5m	3	150mm	15%	14
	<i>Blechnum cartilagineum</i>	Soft water fern	0.6x0.6m	4	150mm	15%	18
	<i>Rhoeo discolor</i>	Moses in the Cradle	0.3x1.0m	4	150mm	15%	60
	<i>Philodendron 'Xanadu'</i>	Philodendron cultivar	1.0x1.0m	4	150mm	29%	35
	<i>Trachelospermum jasminoides 'Tricolour'</i>	Star Jasmine	0.3x1.0m	4	150mm	25%	30
	<i>Parthenocissus henryana</i>	Silver vein creeper	1.5m x 2.0m	2	150mm	1%	1
Zone 4 STRUCTURED / ACTIVE PLAY							
Trees							
AB	<i>Acer buergerianum</i>	Trident Maple	6 x 6m	As shown	100L		3
UP	<i>Ulmus parvifolia</i>	Chinese Elm	13 x 10m	As shown	100L		1
OP4 Ornamental Planting Mix							Area: 38
	<i>Phormium cookianum 'tricolor'</i>	Flax	1.0 x 1.0m	1	300mm	5%	2
	<i>Agave attenuata</i>	Foxtail Agave	0.6x0.6m	2	300mm	5%	4
	<i>Acacia cognata 'Limelight'</i>	Bower Wattle	0.4x0.4m	5	300mm	10%	19
	<i>Lomandra 'Katie Belles'</i>	Lomandra cultivar	0.3x0.3	6	150mm	20%	46
	<i>Pennisetum alopecuroides 'Nafray'</i>	Dwarf fountain grass	0.6x0.5m	4	150mm	10%	15
	<i>Carex appressa</i>	Sedge	1.0 x 1.0m	4	150mm	10%	15
	<i>Diets grandiflora</i>	Fairy Iris	0.8x0.8m	6	150mm	10%	23
	<i>Nandina domestica 'Obsession'</i>	Nandina cultivar	1.0x1.0m	6	150mm	10%	23
	<i>Myoporum parvifolium 'Yareena'</i>	Myoporum cultivar	0.1x1.0m	5	150mm	10%	19
	<i>Trachelospermum jasminoides 'Tricolor'</i>	Tricolor Star Jasmine	0.3x1.0m	4	150mm	10%	15
GM4 Grass Planting Mix							Area: 80
	<i>Lomandra 'Little Con'</i>	Lomandra cultivar	0.3x0.3	6	150mm	20%	96
	<i>Carex appressa</i>	Sedge	1.0 x 1.0m	4	150mm	20%	64
	<i>Diets grandiflora</i>	Fairy Iris	0.8x0.8m	6	150mm	20%	96
	<i>Pennisetum alopecuroides 'Nafray'</i>	Dwarf fountain grass	0.5x0.5m	5	150mm	20%	80
	<i>Casuarina glauca 'Cousin It'</i>	Sheoak 'Cousin It'	0.3x1.0m	3	150mm	20%	48
GP4 Groundcovers & Shrub Planting Mix							Area: 43
	<i>Agapanthus orientalis 'Cloudy Days'</i>	Agapanthus	1.0x0.8m	4	150mm	20%	34
	<i>Clivia miniata</i>	Kaffir lily	1.0x1.0m	4	150mm	20%	34
	<i>Philodendron 'Xanadu'</i>	Philodendron cultivar	1.0x1.0m	4	150mm	20%	34
	<i>Trachelospermum jasminoides 'Tricolour'</i>	Star Jasmine	0.3x1.0m	4	150mm	25%	43
	<i>Grevillea 'Ivanhoe'</i>	Grevillea 'Ivanhoe'	1.2 x 1.5m	1	300mm	5%	2
	<i>Callistemon viminalis 'Slim'</i>	Callistemon cultivar	1.3m x 3m	1	300mm	10%	4

IRRIGATION:
A COMMERCIAL GRADE AUTOMATED IRRIGATION SYSTEM SERVICING ALL COMMON PLANTING AREAS WILL BE REQUIRED. THIS INCLUDES GROUND FLOOR AND ALL ROOF TERRACES, AND ALL PLANTED AREAS SUCH AS LAWN, PLANTERS (AT GRADE), RAISED PLANTERS AND TREES IN THE PRIVATE DOMAIN. DRIP IRRIGATION SHALL BE USED FOR ALL TREES & PLANTING, WHEREAS AS ALL LAWN AREAS WILL BE IRRIGATED WITH POP-UP SPRINKLERS.



Acer palmatum ‘Sango Kaku’



Backhousia citriodora



Hymenosporum flavum



Tristaniopsis laurina



Acacia cognata



Correa alba



Festuca glauca



Asparagus densiflorus ‘Myersii’



Agave attenuata



Grevillea lanigera



Helichrysum petiolare



Philodendron ‘Xanadu’



Rhoeo discolor



Diets grandiflora



Trachelospermum jasminoides ‘Tricolor’



Pennisetum alopecuroides ‘Nafray’

INDICATIVE PLANT SCHEDULE - CONTINUED

Zone 5 NATURAL PLAY / WOODLAND							
Trees							
BE	Banksia ericifolia	Heath-leaved Banksia	6x4m	As shown	75L	n/a	1
BC	** Backhousia citriodora	Lemon Scented Myrtle	6x4m	As shown	100L	n/a	
SS	** Stenocarpus sinuatus	Firewheel tree	15X8m	As shown	100L	n/a	
WF	** Waterhousea floribunda	Weeping Lilly Pilly	10x5m	As shown	100L	n/a	
OP5 Ornamental Planting Mix							
	Casuarina glauca 'Cousin It'	Sheoak 'Cousin It'	0.3x1.0m	3	150mm	15%	90
	Cortea reflexa 'Trixibelle'	Native Fuchsia	0.5x1.0m	1	150mm	20%	36
	Lomandra 'Tanika'	Lomandra cultivar	0.5x0.5m	5	150mm	20%	18
	Callistemon 'Little John'	Callistemon	1.2 x 1.5m	1	300mm	20%	90
	Grevillea rhyallitica x juniperina	Grevillea Cherry Cluster	0.5x0.8m	4	150mm	15%	20%
	Hibbertia scandens	Snake Vine	0.3x1.0m	5	150mm	10%	72
GP5 Groundcovers & Shrub Planting Mix							
	Alternanthera	Alternanthera	0.5x1.5m	3	150mm	20%	45
	Lomandra 'Katie Belles'	Lomandra cultivar	0.3x0.3	6	150mm	20%	72
	Grevillea rosmarinifolia	Rosmary Grevillea	1.2 x 1.5m	1	150mm	20%	144
	Hibbertia scandens	Snake Vine	0.3x1.0m	5	150mm	20%	24
	Trachelospermum jasminoides 'Tricolour'	Star Jasmine	0.3x1.0m	4	150mm	20%	120
GM5 Grass Planting Mix							
	Agave attenuata	Foxtail Agave	0.6x0.6m	2	300mm	5%	96
	Lomandra 'Little Con'	Lomandra cultivar	0.3x0.3	6	150mm	25%	4
	Carex appressa	Sedge	1.0 x 1.0m	4	150mm	25%	53
	Dianella revoluta 'Little Rev'	Fairy Lilies	0.3x0.3	6	150mm	20%	35
	Pennisetum alopecuroides 'Nafray'	Dwarf fountain grass	0.5x0.5m	5	150mm	25%	42
LM5 Low Maintenance Groundcovers							
	Grevillea 'Gaudichaudii'	Prostrate Grevillea	0.3x3.0m	5	150mm	35%	44
	Trachyspermum jasminoides	Chinese Star Jasmine	0.3x1.0m	4	150mm	30%	96
	Grevillea poirinda 'Royal mantle'	Grevillea Royal Mantle	0.3x1.0m	4	150mm	35%	112
Zone 6 ROOF TERRACE							
Trees							
LI	Lagerstromia indica	Crepe myrtle	4 x 4m	As shown	75L		
Feature Shrubs							
DE	Doryanthus excelsa	Gynea lily	2.0x1.2m	As shown	300mm	n/a	5
OP6 Ornamental Planting Mix							
	Agave attenuata	Foxtail Agave	0.6x0.6m	2	150mm	5%	100
	Aloe spinosissima	Spider Aloe	0.3x0.3m	6	150mm	10%	10
	Anigozanthos hybrid 'Amber Velvet'	Velvet Kankaroo Paw	0.4x0.5m	5	150mm	10%	178
	Dianella caerulea 'Cassa Blue'	Flax Lily cultivar	0.5x0.5m	4	150mm	10%	50
	Myoporum parvifolium 'Yareena'	Myoporum cultivar	0.1x1.0m	5	150mm	10%	40
	Eremophila glabra prostrate 'Blue Horizon'	Eremophila Blue Horizon	0.2x1.0m	2	150mm	10%	70
	Grevillea lanigera	Woolly Grevillea	0.5x0.5m	4	150mm	10%	28
	Rhoeo discolor	Moses in the Cradle	0.3x1.0m	4	150mm	10%	40
	Sansevieria trifasciata	Snake Plant	0.6x0.3m	5	150mm	5%	40
	Trachyspermum jasminoides	Chinese Star Jasmine	0.3x1.0m	4	150mm	10%	25
	Westringia 'Mundi'	Westringia cultivar	0.3x1.0m	5	150mm	10%	56
RO6 Raised Ornamental Planting Mix							
	Anigozanthos hybrid 'Amber Velvet'	Velvet Kankaroo Paw	0.4x0.5m	5	150mm	15%	50
	Cordyline australis	Cordyline cultivar	1.5x1.5m	4	150mm	10%	36
	Myoporum parvifolium 'Yareena'	Myoporum cultivar	0.1x1.0m	5	150mm	10%	19
	Eremophila glabra prostrate 'Blue Horizon'	Eremophila Blue Horizon	0.2x1.0m	2	150mm	20%	48
	Grevillea lanigera	Woolly Grevillea	0.5x0.5m	4	150mm	20%	19
	Westringia 'Mundi'	Westringia cultivar	0.3x1.0m	5	150mm	15%	36
LG6 Low Groundcovers							
	Myoporum parvifolium 'Yareena'	Myoporum cultivar	0.1x1.0m	5	150mm	50%	20
	Eremophila glabra prostrate 'Blue Horizon'	Eremophila Blue Horizon	0.2x1.0m	2	150mm	50%	50
LM6 Low Maintenance Groundcovers							
	Alternanthera dendata 'Little Ruby'	Alternanthera cultivar	0.5x0.5m	4	150mm	15%	140
	Eremophila glabra prostrate 'Blue Horizon'	Eremophila Blue Horizon	0.2x1.0m	2	150mm	20%	84
	Grevillea rhyallitica x juniperina	Grevillea Cherry Cluster	0.5x0.8m	4	150mm	15%	56
	Rhoeo discolor	Moses in the Cradle	0.3x1.0m	4	150mm	10%	84
	Pennisetum alopecuroides 'Nafray'	Dwarf fountain grass	0.5x0.5m	5	150mm	15%	40
	Trachyspermum jasminoides	Chinese Star Jasmine	0.3x1.0m	6	150mm	10%	105
	Dianella caerulea 'Cassa Blue'	Cordyline cultivar	0.5x0.5m	4	150mm	15%	84
EP6 Edible Planters							
	Salvia officinalis	Sage	0.5x0.5m	3	150mm	25%	4
	Brassica oleracea var. sabellica	Kale	0.5x0.5m	3	150mm	25%	3
	Rosmarinus officinalis	Rosemary	0.1 x 1.0m	3	150mm	25%	3
	Helichrysum italicum	Curry Plant	0.4x0.4m	3	150mm	25%	3
ER6 Extensive Roof Full sun (Maintenance Only Access)							
	Carpobrotus glaucescens 'Aussie Rambler'	Pigface	0.2x1.5m	3	tubestock	30%	297
	Drosera rotundifolia	Ice Plant	0.3x0.3m	6	tubestock	25%	267
	Oscularia deltoides	Ice Plant	0.3x0.3m	4	tubestock	25%	446
	Myoporum parvifolium 'Yareena'	Creeping Boobialla	0.3x1.0m	4	tubestock	5%	297
	Sedum reflexum	Blue Stonecrop	0.3x0.3m	6	tubestock	15%	59



Hibiscus tiliaceus 'Rubra'



Alternanthera dendata 'Little Ruby'



Hibbertia scandens



Rosmarinus 'Prostrate'



Banksia ericifolia



Callistemon 'Little John'



Lomandra 'Tanika'



Oscularia deltoides



Lagerstromia indica



Casuarina glauca 'Cousin It'



Helichrysum italicum



Myoporum parvifolium



Waterhousea floribunda



Grevillea 'Ivanhoe'



Brassica oleracea var. sabellica



Salvia officinalis

**TREES SPECIES RECOMMENDED BY EARTHSCAPE ARBORIST TREE IMPACT REPORT

IRRIGATION:
A COMMERCIAL GRADE AUTOMATED IRRIGATION SYSTEM SERVICING ALL COMMON PLANTING AREAS WILL BE REQUIRED. THIS INCLUDES GROUND FLOOR AND ALL ROOF TERRACES, AND ALL PLANTED AREAS SUCH AS LAWN, PLANTERS (AT GRADE), RAISED PLANTERS AND TREES IN THE PRIVATE DOMAIN. DRIP IRRIGATION SHALL BE USED FOR ALL TREES & PLANTING, WHEREAS AS ALL LAWN AREAS WILL BE IRRIGATED WITH POP-UP SPRINKLERS.

MAINTENANCE PLAN

PLANTING

CONDITIONS
Planting will not occur in unsuitable weather conditions such as extreme heat, cold, wind or rain. In other than sandy soils, excavation will be suspended when the soil is wet, or during frost periods.

WATERING
Plants will be watered thoroughly before planting, immediately after planting, and as required to maintain growth rates free of stress.

PLACING
Plants will be removed from the container with minimum disturbance to the root ball. Roots will be pruned to ensure all circling roots have been either severed or aligned radially into the surrounding soil. It will be ensured that the root ball is moist and placed in its final position, in the centre of the hole and plumb, and with the top soil level of the plant root ball level with the finished surface of the surrounding soil. Soil will be lighting compacted so as to minimise subsidence without compacting the backfill.

FERTILISING
In planting beds and individual plantings, fertiliser pellets will be placed around the plants at the time of planting.

BACKFILLING
A topsoil mixture will be used to backfill and lightly tamped and watered to eliminate air pockets. Topsoil will not be not placed over the top of the root ball, so that the plant stem remains the same height above ground as it was in the container.

DRAINAGE
Refer Civil documentation for drainage details.

WORKS WITHIN TPZ
All works within Tree Protections Zones, including removal of existing trees and excavation for new plantings, to be carried out in accordance with the Arborists Report

IRRIGATION
All planted areas will be irrigated with a seasonably adjustable automatic drip irrigation system.
MAINTENANCE

LANDSCAPE MAINTENANCE

GENERALLY
Throughout the maintenance period recurrent works of a maintenance nature will be carried out including but not limited to watering, mowing, weeding, fertilising, pest and disease control, plant replacement and the like.

WATERING
Planted areas shall be watered regularly to ensure continuous healthy growth.

WEEDING AND RUBBISH REMOVAL
Removal by hand, rubbish and weed growth that occurs throughout all contract areas shall be executed regularly so that at weekly intervals, at least, the contract area may be observed in a completely clean and tidy condition.

REPLACEMENTS
Plants shall be replaced immediately which die or fail to thrive or are damaged or stolen, with plants of same size and quality.

PRUNING
Pruning work shall be implemented to maintain dense foliage growth and encourage suitable growth habits.

MULCH
Mulched surfaces will be maintained in a clean and tidy condition. Mulch will be reinstated to specified depths and extents as specified.

SPRAYING
Insecticide and fungicide spraying to be avoided within play areas. The Contractor shall treat all occurrences of insect attack or disease in plant material using safe organic treatment methods in accordance with manufacturers.

LANDSCAPE ELEMENTS
Paving – General cleaning of paths and footpaths
Furniture and landscape elements – to be clean, clear of obstacles and fallen rails.
All exposed timber to be oiled with CN oil biannually.
Maintain play equipment in accordance with playground safety inspections
Maintain compliant playground safety mulch depths

PLANTED AREAS ON STRUCTURE

SOIL MIXES
All planted areas will use specialised lightweight, free-draining soil mixes. Soil depths for planting will be min. 350mm for groundcovers, min. 500mm for shrubs and min 800mm for small feature trees.

WHS
All planted surfaces at height outside the roof top edge protection are accessible to trained maintenance staff only. Safety anchors secured to clip on points shall be used at all times when working at height outside the balustrade areas.